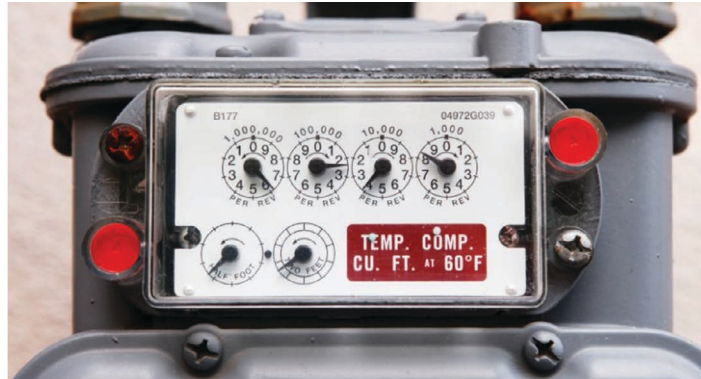


How to read your meter

Gas meter



Natural gas dials represent the amount of natural gas measured in volumes of hundreds of cubic feet (ccf).

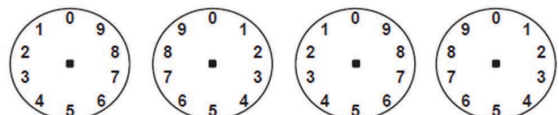
A gas meter is driven by the force of the moving gas in the pipe, and also turns faster as the flow increases. Each time the dial with the lower value makes one complete revolution, the pointer on the next higher value dial moves ahead one digit.

To read your meter:

- Be at **eye level** of the dials.
- Mark the dials from **left to right**.
- Take note of the **direction of the arrows** on the display – the pointer of adjacent dials turn in opposite directions to each other.
- **Draw the pointer** on the dials as displayed on your gas meter.
- When the pointer on the dial is between two numbers, **record the lower number**.
- If the pointer is between 9 and 0, **9 is the lower number**.
- When the pointer is directly on the number, **look at the dial to its right:**
 - ↳ Has the dial on the right has **passed 0**, yes, use the number that the pointer is on
 - ↳ The dial on the right **has not passed “0,”** use the number less than what the pointer is on

Your natural gas dial meter read:

--	--	--	--



Meter read date: _____

Options to submit your meter reads:

- Submit online at myaccount.northwesternenergy.com/NWESSP
- Call (888)-467-2669; M-F 7 a.m.-6 p.m.
- Mail the meter reading card to us at: NorthWestern Energy, 11 E. Park St., Butte, MT 59701

Electric meter



The basic unit of measure of electric power is the watt. One thousand watts is a kilowatt. If you use one thousand watts of power in one hour you have used a kilowatt-hour (kWh). You are billed by the kWh.

The standard electric power meter is a clock-like device driven by the electricity moving through it. As the home draws current from the power lines, a set of small gears move inside the meter. The number of revolutions is recorded by the dials that you can see on the face of the meter. The speed of the revolutions depends on the amount of current drawn – the more power consumed at any one instant, the faster the gears will rotate.

With modern digital meters, kWhs are displayed on a digital read out, rather than with gears.

When reading an electric meter, write down the numbers as shown on the meter.

Your digital electric meter read:

--	--	--	--	--	--

Meter read date: _____

When submitting your meter reads, please be ready with your account number, your service address, your meter read(s) and the date you read your meter(s).

Options to submit your meter reads:

- Submit online at myaccount.northwesternenergy.com/NWESSP
- Call (888)-467-2669; M-F 7 a.m.-6 p.m.
- Mail the meter reading card to us at: NorthWestern Energy, 11 E. Park St., Butte, MT 59701