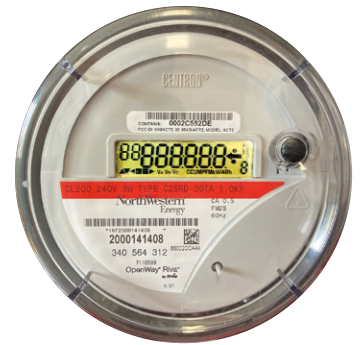


Understanding Your NorthWestern Electric Meter

Conventional Metering Customers



Segment Test

Tests the LCDs to visually ensure the display will be correct.



Sync Network Status

SYCNET- Meter is sync'd to the NorthWestern network.



Registration Status

Reg - Meter is registered to the network.



Network Link Status

Network Link Status – Informs NorthWestern Energy how well the meter is communicating.



Disconnect Status

Internal disconnect status screen - Only appears when the meter is in a disconnected state.



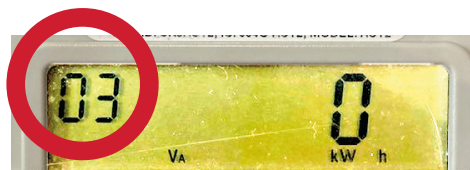
Net Kilowatt Hours Delivered

01 = Net Kilowatt Hours Register
The net value between the kilowatt hours delivered (register 02) and kilowatt hours received (register 03).



Kilowatt Hours Delivered

02 = Kilowatt Hours Delivered Register
The kilowatt hours delivered to the customer from NorthWestern. This is the billing register for conventional NorthWestern customers. 01 and 02 will be the same.



Kilowatt Hours Received

03 = Kilowatt Hours Received Register
The Kilowatt Hours NorthWestern has received from the customer. Non Net customers will read 0.



Max Kilowatts Delivered

04 = Max Kilowatts Delivered
The current max demand is displayed in kilowatts. Demand charges are for customers with a demand rate type. This screen is displayed whether they are a demand customer or not.