

**MISSOURI-MADISON RIVER FUND RECREATION PROJECT
FY2023 GRANT APPLICATION FORM**

Project Name: Riverside Campground – Resurfacing

Reservoir or River Segment: Hauser Reservoir County(ies) Lewis and Clark County

Site Name (or project location): Riverside Campground – Hauser Reservoir

Applicant Name: Dan Gallagher

Position and Agency: Outdoor Recreation Planner – Bureau of Reclamation

Telephone: 406-475-3925

Email: dagallagher@usbr.gov

Project Sponsor Name: _____

Position and Agency: _____

Telephone: _____

Email: _____

Project Cost Breakdown and Financial Request:

Complete the financial section below by providing total project cost (to the nearest dollar), contributions by applicant and cooperators, request for NorthWestern Energy match of agency funds (see detailed instruction), and River Fund Grant request. Document in-kind contributions by public agencies for determination of NorthWestern Energy match request. A description of funding sources and in-kind contributions should be included in the Project Description.

Total project cost: \$175,000

Applicant Contributions – cash \$64,800

Applicant Contributions – value of in-kind: \$5,200

Other Contributions – Please list by source:

\$

\$

\$

\$

Percentage of
Total Project Cost:

Total Applicant and Other Contributions: \$70,000 40%

NorthWestern Energy Match Request: \$70,000 40%

River Fund Grant Request: \$35,000 20%

Proposed Project Implementation Period: Sept./ Oct 2023

**MISSOURI-MADISON RIVER FUND RECREATION PROJECT
FY2023 GRANT APPLICATION FORM**

1. Has this project been previously submitted for funding consideration by the River Fund Board, either as a separate project or part of another project? ☐ Yes ☒ No

If yes, please identify which years the application was submitted and, if the project was previously funded, list the amount funded by year.

2. **Project Description:** Provide a description of the proposed project. Be sure to include specific project elements that are planned, and any associated cost detail.

Riverside Campground is located at the southern end of Hauser Reservoir at the base of Canyon Ferry Dam. In 2011, Riverside Campground was updated with new facilities that included designated campsites, improved campground layout, new group use shelter area, accessible fishing and a river access trail and an upper trail that goes throughout the campground. Today the campground has 34 designated campsites, 5 ADA campsites, group use shelter with seven campsites and an accessible fishing dock and boat ramp.

The purpose of this project is to provide and ensure the recreation facilities and amenities within Riverside Campgrounds meet the ADA requirements.

During the 2011 redesign of Riverside Campground the contractor used a new untested product for the campsites, walkways and walking surfaces and was to meet ADA requirements for all the facilities within the campground. Since 2011 this product has been degrading and creating a gravel-like surface that has become a slip hazard and does not meet the ADA requirements.

In the fall 2023, Reclamation proposes to resurface all public access areas with asphalt to ensure ADA access. Rehabilitated areas will include access to three pair of ADA-accessible vault toilets, fishing dock, boat dock and river trail, upper access trail, four water hydrants, one tri-panel kiosk, and five campsite bump outs.

Reclamation will begin the process by prepping the sites and facilities for asphalt. This will include using Reclamation staff and equipment to spray and remove unwanted vegetation along with the removal of the current obsolete surface. It's estimated this process will take up to three weeks to complete.

Once facilities are prepped a local asphalt contractor will place the asphalt as per specification. The contractor will use a six-foot-wide asphalt machine with a 3/8 asphalt gravel mix to provide ADA accessible surfaces around all campground facilities and will ensure ADA compliance for all cross slopes and running slopes as specific to the contract.

It's estimated that the amount of asphalt required will be 3200 square yards at a total project cost of \$175,000.00.

3. **Project Phasing:** Briefly discuss whether the project could be phased over more than one year or construction season.

It is not logical to phase this project over multiple years. It's estimated to take 3 to 4 weeks total depending on the amount of prep work required. Placing asphalt should only take 3 to 4 days.

4. **Cultural Resource Management:** Cultural Resource Management (CRM) requirements for any activity related to this Project must be completed and documented to NorthWestern Energy as a condition of awarded River Fund grant funds or NorthWestern Energy matching funds. Grant and matching funds may not be used for any land-disturbing activity, or the modification, renovation, or removal of any

buildings or structures until the CRM consultation process has been completed. Agency applicants must submit a copy of the proposed project to a designated Cultural Resource Specialist for their agency. Private parties or non-governmental organizations are encouraged to submit a copy of their proposed project to a CRM consultant they may have employed. Private parties and non-governmental organizations may also contact the NorthWestern Energy representative for further information or assistance. Applications submitted without this section completed will be held without any action until the information has been submitted.

Summarize how you will complete requirements for Cultural Resource Management.

The Bureau of Reclamation is required to complete cultural compliance through Reclamation's Archaeologist and the Montana State Historic Preservation Office. In 2011 Riverside Campground completed a major rehab project and all environmental and cultural reviews were completed prior to construction. Prior to beginning this proposed project, Reclamation will update the compliance for both environmental (NEPA) and cultural compliance (NHPA) prior to any construction and provide copies of that documentation.

5. **Scoring Criteria.** Respond to the following Scoring Criteria. Put answers in the cell after

5.1 Does the project occur at a 2188 license site?

No, Riverside Campground is not a 2188 site, though is located at the beginning of Hauser Reservoir.

5.2 Project is for operation and maintenance of an existing recreation site. Describe if the project will meet operation and maintenance needs. Higher points awarded to projects that are higher priority and are not a recurring expense. Lower points awarded to projects that are low priority and/or have been previously funded. It is unlikely that the time frame of River Fund would address emergency operation and maintenance needs but could support non-emergency operation and maintenance needs.

This is a high priority non-recurring project. Once the asphalt surface is placed the surface will require minimal amount of maintenance for the next 15 to 20 years. The use of an asphalt surface will greatly reduce the operation and maintenance issue providing a stable and non-slip surface meeting accessible ADA access requirements and less maintenance by reducing unwanted vegetation from encroaching in the campsites and public walkways.

Reclamation will plan to chip seal the asphalt in future years to extend the life of the surface. The timeframe for that project will depend on how the initial surface wears over time. Another Reclamation Campground in the vicinity was paved with asphalt in 2005 and to date little to no maintenance has been required of the asphalt or adjacent vegetation.

5.3 Project involves collaboration with other agencies or organizations. Identify project partners other than NorthWestern Energy or River Fund, if any, and describe their participation. Document all funding sources and all in-kind support and services to a project because all are sources of partnerships and in-kind contributions from public agencies qualify for calculation of NorthWestern Energy matching funds. If there are no project partners, explain why.

Collaboration with other agencies or organizations is challenging for projects of this nature. Reclamation is providing a substantial portion of the funding along with in-kind contributions. The funding through the River Fund grant will be used for a contractor to place the asphalt along the lower river trail and ADA accessible facilities within the campground. This includes any additional dirt work that is needed by the contractor.

- 5.4 Project provides a benefit to public recreation in the Project Area and addresses specific issues and goals of the Missouri-Madison Comprehensive Recreation Plan (CRP). Identify how the project provides a benefit to public recreation and describe how the project specifically addresses issues and goals in Chapter 2-1 of the CRP.

Missouri-Madison Comprehensive Recreation Plan (CRP) has identified the “Interaction of recreationists with the natural environment has implications related to public safety and responsible outdoor behavior, as well as universal accessibility, human health factors, and resource protection concerns.” This project will improve public recreation by offering those needing accessible recreation facilities with safe and accessible facilities that will enable anyone with limited mobilities access to fish, camp and enjoy river access.

- 5.5 Project responds to a clearly identified need. Describe and document the need for this project and how the project would address that need. Cite specific sources, as possible, to establish need and support the project. Discuss consequences if the funding request is unsuccessful. For a new construction or acquisition project, identify how post-project, long-term costs (such as site maintenance and management) will be provided.

The need for this project is to provide recreation facilities that are ADA compliant as required by the Uniform Federal Accessibility Standards and Americans with Disabilities Act. As the current surface continues to degrade creating a slip hazard that doesn’t meet the ADA requirements makes this project a high priority. As a federal agency The Bureau of Reclamation has the obligation to provide accessible recreation facilities. Not providing this improvement can result in putting the government at risk of a lawsuit or personal injury.

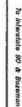
- 5.6 Project design options have been considered, estimated, and a preferred design selected. Well-designed projects reduce occurrences of budgetary overages, design changes, and additional complications. Discuss the current design phase for this project, demonstrate that the project has been well vetted, and include cost estimates.

To ensure this project was well vetted Reclamation had Cap Paving and Helena Sand and Gravel provide a cost estimate and conducted an onsite visit. It’s estimated that the project will cost 175,000. This includes prepping the site and placement of asphalt.

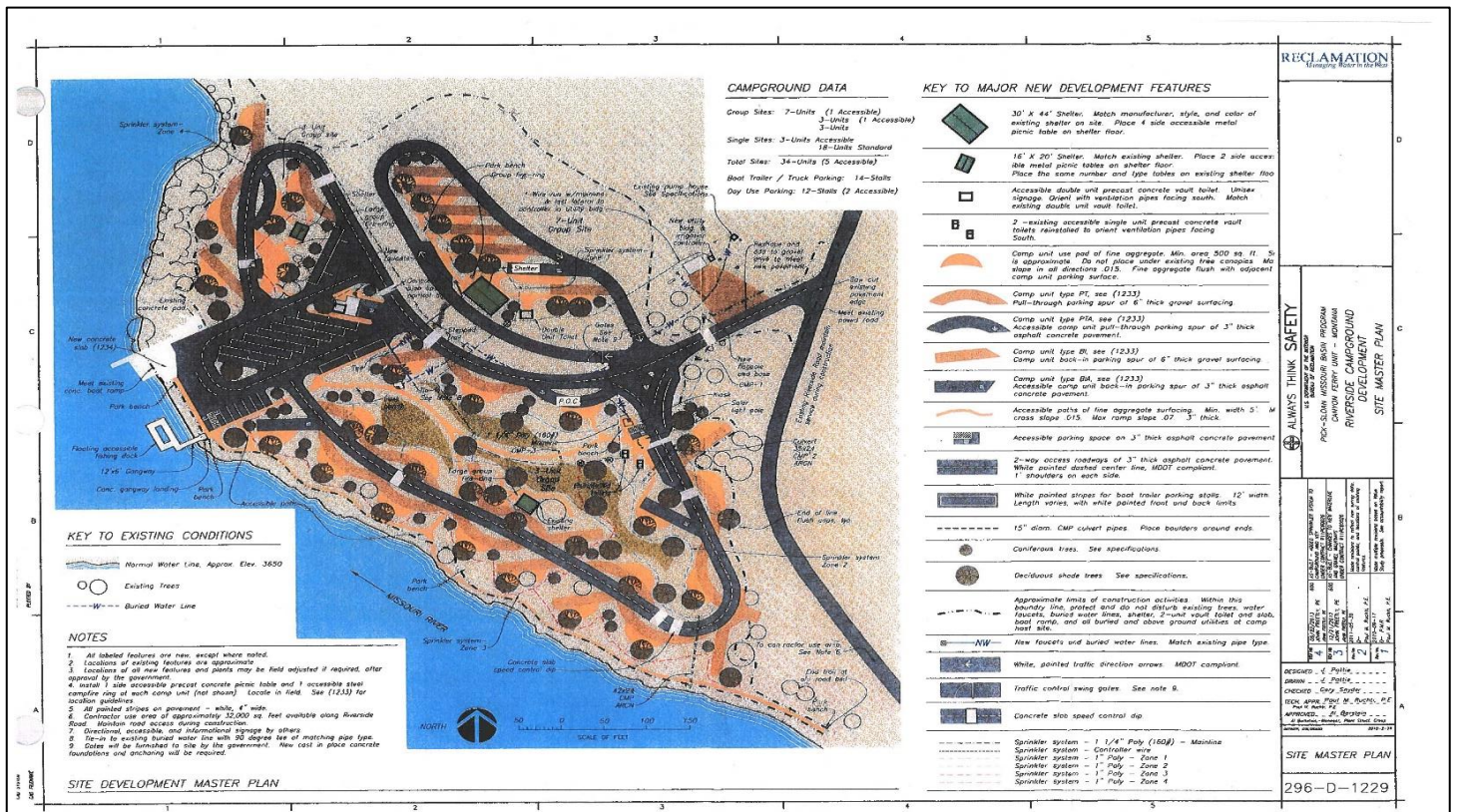
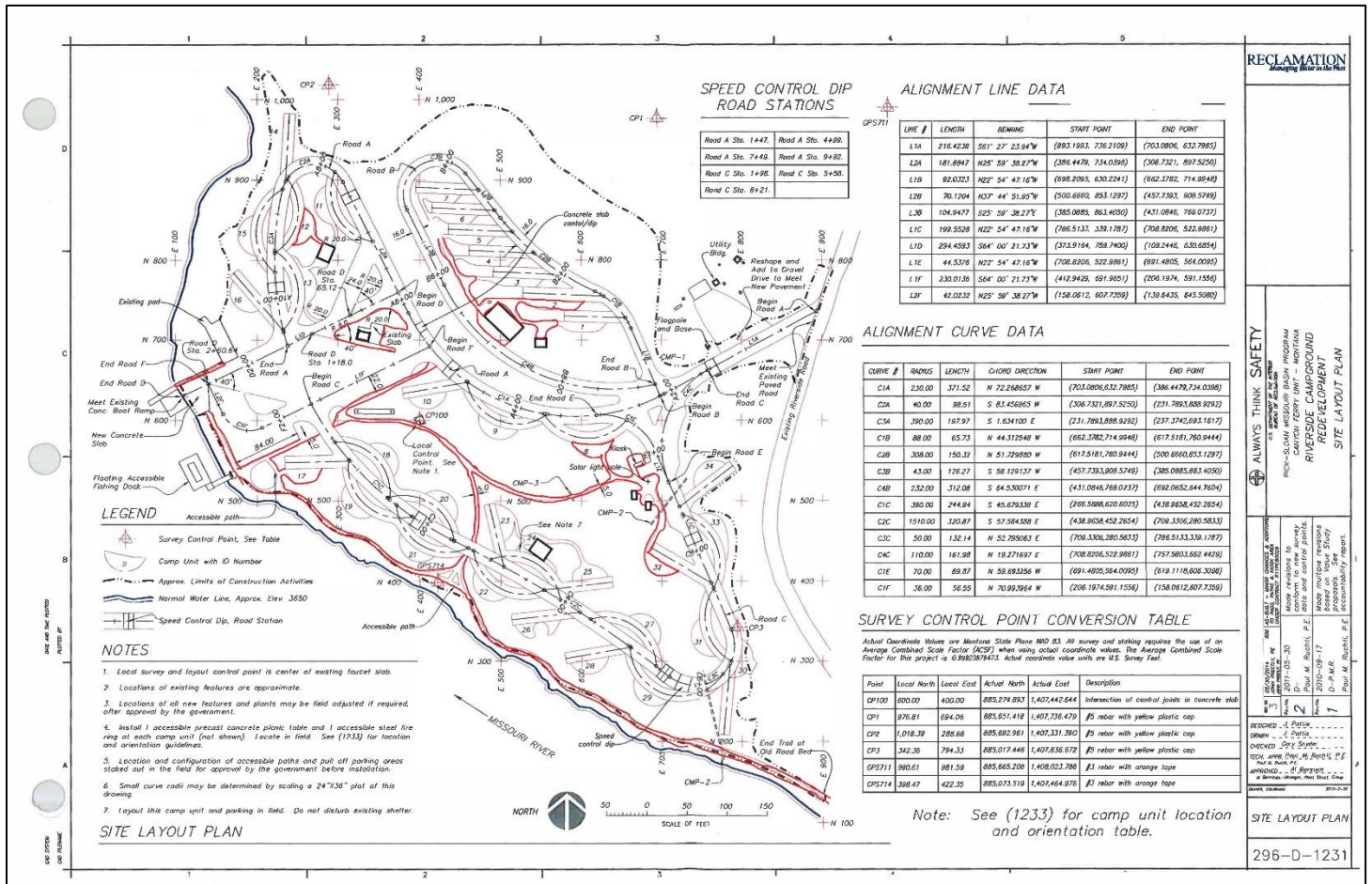
- 5.7 Project supports or protects other resources and is consistent with or supports resource plans in the Project Area. Describe how this project will protect resource values (such as public access, water quality, fisheries, wildlife, habitats, and cultural resources) and support other resource and agency plans, including Project 2188 License plans and land use and land management plans in place in the Corridor. Management plans should provide justification for the project.

Reclamation’s recreation program is managed using the recreation and resource management plan to facilitate the planning needs for each of the managed recreation areas. Before the 2011 redesign of Riverside Campground there was a significant design and public input process undertaken prior to construction. Unfortunately, the product used to establish a stable walking surface for the campsites and walking paths has since failed. Completing this project and using a 3/8 asphalt gravel mix will provide an ADA accessible surface throughout the campground.

6. Insert (s) showing the location of the proposed project, drawings and design work related to the project, and a reasonable number of photos (as available) here.

296-600-3340

Project Map Riverside Campground - Proposed work is highlighted in red



Current Condition Photos



Accessible walking path, River Trail



Accessible Campsite 10 and Fishing Pier



Accessible walking path to boat ramp



Accessible walkway to the shelter and vault toilets



Accessible path to the water hydrant



Access to the fishing dock and boat launch



Accessible Campsite 10



Accessible Campsite 27



Accessible parking pad with walkway