

ORIGINAL ^N



GENERAL OFFICES : 40 EAST BROADWAY, BUTTE, MONTANA 59701

March 24, 1994

MPCo-THO-0855

Ms Lois D. Cashell
Secretary
Federal Energy
Regulatory Commission
425 N Capitol Street
Room 9310
Washington, DC 20426

FILED
OFFICE OF THE SECRETARY
94 MAR 28 AM 9:32
FEDERAL ENERGY
REGULATORY
COMMISSION

RE : The Montana Power Company
Project No. 1869-012 019
Thompson Falls Project

Dear Ms. Cashell:

Submitted herewith are the original and eight copies of the Revised Report on Recreation Resources for the Montana Power Company's Thompson Falls Project, Federal Energy Regulatory Commission Project No. 1869-012. The revised plan is being submitted in accordance with Article 404 of the Order Approving Access Road Relocation Plan and Amending License, Issued May 21, 1993.

Sincerely,

Larry D. Thompson
Manager
Power Generation

LDT/sv

Enclosures

1-10

TELEPHONE 406/723-5421 • FACSIMILE 406/496-5099

FERC DOCKETED

MAR 28 1994

2014 0000

ORIGINAL

FILED
OFFICE OF THE SECRETARY

54 MAR 28 AM 9:32

FEDERAL ENERGY
REGULATORY
COMMISSION

REVISED REPORT
ON
RECREATION RESOURCES

PROPOSAL FOR REVISED ISLAND,
HIGH BRIDGE AND SOUTH SHORE DEVELOPMENTS
THOMPSON FALLS HYDROELECTRIC DEVELOPMENT
FERC PROJECT NO. 1869-012 019

MARCH, 1994

THE MONTANA POWER COMPANY
BUTTE, MONTANA

2015 0000

THOMPSON FALLS RECREATION RESOURCES

TABLE OF CONTENTS

	<u>PAGE NO.</u>
1.0 INTRODUCTION	1
2.0 PROPOSED RECREATION DEVELOPMENT	2
3.0 PROPOSED RECREATION FACILITIES	3
3.1 Island Development	3
3.2 High Bridge	3
3.3 South Shore Development	3
4.0 OPERATION AND MAINTENANCE OF THE PROPOSED FACILITIES	5
5.0 PROJECT BOUNDARY AND FACILITIES	6
6.0 COSTS	7
6.1 Development	7
6.1.1 Island Development	7
6.1.2 High Bridge	7
6.1.3 South Shore Development	7
6.2 Operation and Maintenance	7
6.2.1 Island Development	7
6.2.2 High Bridge	7
6.2.3 South Shore Development	7
7.0 CONSTRUCTION SCHEDULE	8

FIGURES

LETTERS OF CONSULTATION

1.0 INTRODUCTION

The Montana Power Company (MPC) filed an application to amend its Thompson Falls Project License with the Federal Energy Regulatory Commission (FERC) on May 3, 1993. The proposed amendment identified an alternative access road and spoils area in respect to the new powerhouse project in lieu of those to be located on the island between the Main and Dry Channel dams. The amendment also required a change to article 404 of the license (the project recreation plan).

On May 21, 1993 the FERC issued the Order Approving Access Road Relocation Plan and Amending License which included a revised article 404 that directed MPC to file a revised report on recreation resources detailing its proposal for recreation development in lieu of constructing Island Park as originally proposed. The revised report must be submitted to FERC by April 1, 1994.

Pursuant to the May 21, 1993 letter from FERC the MPC sought input from the City of Thompson Falls, Sanders County, the Sanders County Economic Development Corporation, the Montana Department of Fish, Wildlife and Parks, the US Forest Service, and the National Park Service regarding the appropriate recreation development in lieu of Island Park, which was to consist of a highly altered setting and urban park facilities. Refer to the attached letters of consultation.

2.0 PROPOSED RECREATION DEVELOPMENT

The consensus during the meetings held on August 23, 1993, September 27, 1993 and February 17, 1994 in Thompson Falls was to develop the island for public recreation in a manner similar to that originally proposed for Island Park. The proposal, represented on the enclosed drawings, emphasizes the island's natural setting without the extensive restoration and developmental efforts that would have been required following the placement of spoils. Refer to Figure 1 for an overview of the proposal. The consensus was also to contribute funds toward rehabilitation of the abandoned High Bridge or toward limited development of the area along the south shore of the river (South Shore). The decision to contribute funds toward rehabilitation of the abandoned High Bridge or toward limited development of the South Shore is dependent upon whether or not the local government and agencies rehabilitate the High Bridge.

Measures will be taken as appropriate to protect elements of the island's cultural resource during project construction. For example, the alignment of the trail spurs leading from the primary access trails may vary slightly from those indicated in the drawings. These activities will occur during the initial "laying-out" of the project prior to construction.

3.0 PROPOSED RECREATION FACILITIES

3.1 Island Development

MPC proposes to develop a public recreation area on the island between its Main and Dry Channel dams. The primary focus will be on retaining the island's natural character, while at the same time providing the public with trail, historic and natural interpretive, picnic and rest room facilities, and park benches at the overlooks. The facilities will accommodate recreationists with disabilities. Spurs off the primary trail will lead to remote areas on the island and will not be accessible to disabled recreationists due to the island's rugged natural terrain. Refer to Figures 2 through 6 for details.

Pedestrian and bicycle access will be provided via the Gallatin Street Bridge on the north side of the island. Improvements on the bridge will include a six foot wide walkway to allow recreationists with disabilities access to the island.

General public parking will be identified and provided along Gallatin Street, at the museum and county parking lot, located approximately two blocks northeast of the Gallatin Street Bridge. From there, pedestrians will be directed with signs, past the museum to the island park. Parking will be provided for recreationists with disabilities at the north end of the Gallatin Street Bridge.

3.2 High Bridge

MPC proposes to contribute up to \$20,000 toward the rehabilitation of the High Bridge as a means of providing pedestrian and bicycle access to the south side of the Clark Fork River. The local governments would utilize the contribution as a private match in seeking state and federal dollars through grants to rehabilitate the bridge. Preliminary cost estimates to rehabilitate the bridge range from approximately \$100,000 to over \$200,000. If the community does not pursue the bridge rehabilitation by December 31, 1998, MPC's funding commitment will shift to the development on the south shore. MPC will remain in contact with Sanders County pertaining to the status of the High Bridge.

3.3 South Shore Development

The need for the South Shore development is dependent on whether or not the High Bridge is rehabilitated. That is, if the High Bridge is rehabilitated the public will have quick and easy pedestrian and bicycle access from Thompson Falls. This will allow the public use of the facilities on the island on their way to and from the South Shore. If the bridge is not rehabilitated access will remain as it is currently, which

is primarily by automobiles.

Therefore, MPC proposes to develop the South Shore in lieu of a financial contribution to the High Bridge if the local government and respective agencies do not pursue rehabilitation of the bridge by December 31, 1998. Facilities will include a designated parking area, picnic tables and a rest room if the area is developed. Refer to Figure 7 for details.

4.0 OPERATION AND MAINTENANCE OF THE PROPOSED FACILITIES

MPC will pursue a cooperative management agreement or contract with The City of Thompson Falls or Sanders County to operate and maintain the Island Development and South Shore Development, if it is constructed. However, MPC will remain responsible for the proper operation and maintenance of the developments.

5.0 PROJECT BOUNDARY AND FACILITIES

The island on which MPC proposes the development is located between the Thompson Falls Project's Main and Dry Channel dams.

6.0 COSTS

6.1 Developmental

The following developmental cost estimates are in 1994 dollars and were provided by Bob Fulton, Civil Engineer, Polson, MT in February, 1994.

6.1.1 Island Development

The cost for constructing the Island Development is estimated to be approximately \$80,000.

6.1.2 High Bridge

MPC's contribution to the rehabilitation of the High Bridge is \$20,000. This contribution is dependent on the future decision to rehabilitate the bridge for pedestrian and bicycle access. If the community does not to pursue the bridge rehabilitation by December 31, 1998, MPC's funding commitment will shift to the development on the south shore.

6.1.3 South Shore Development

The cost for constructing the South Shore is estimated to be approximately \$17,200.

6.2 Operation and Maintenance

The following operation and maintenance costs are in 1994 dollars and will be adjusted in the future to reflect the actual costs of properly operating and maintaining the developments.

6.2.1 Island Development

MPC estimates the annual operation and maintenance costs for the Island Development to be between \$3,500 and \$5,200. The \$5,200 estimate was provided by the USPS through consultation on this project.

6.2.2 High Bridge

MPC does not propose to contribute to the operation and maintenance of the High Bridge, which is owned by Sanders County.

6.2.3 South Shore Development

MPC estimates the annual operation and maintenance costs for the South Shore Development to be approximately \$2,000.

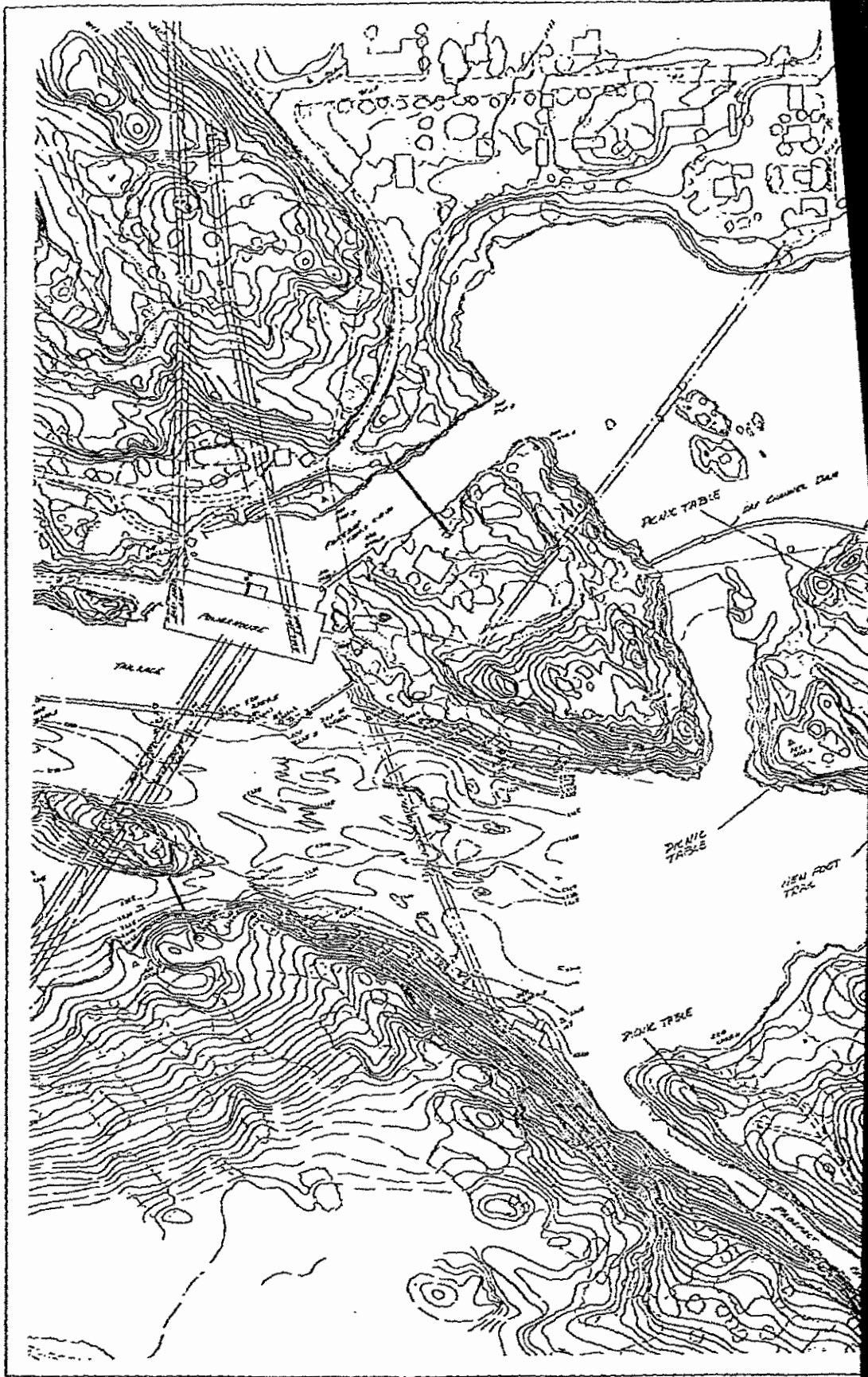
7.0 CONSTRUCTION SCHEDULE

The development on the island between the Main and Dry Channel dams will be completed within one year of completion of the expansion project, which is scheduled for 1996.

FIGURES

18094081T01

2025 0000



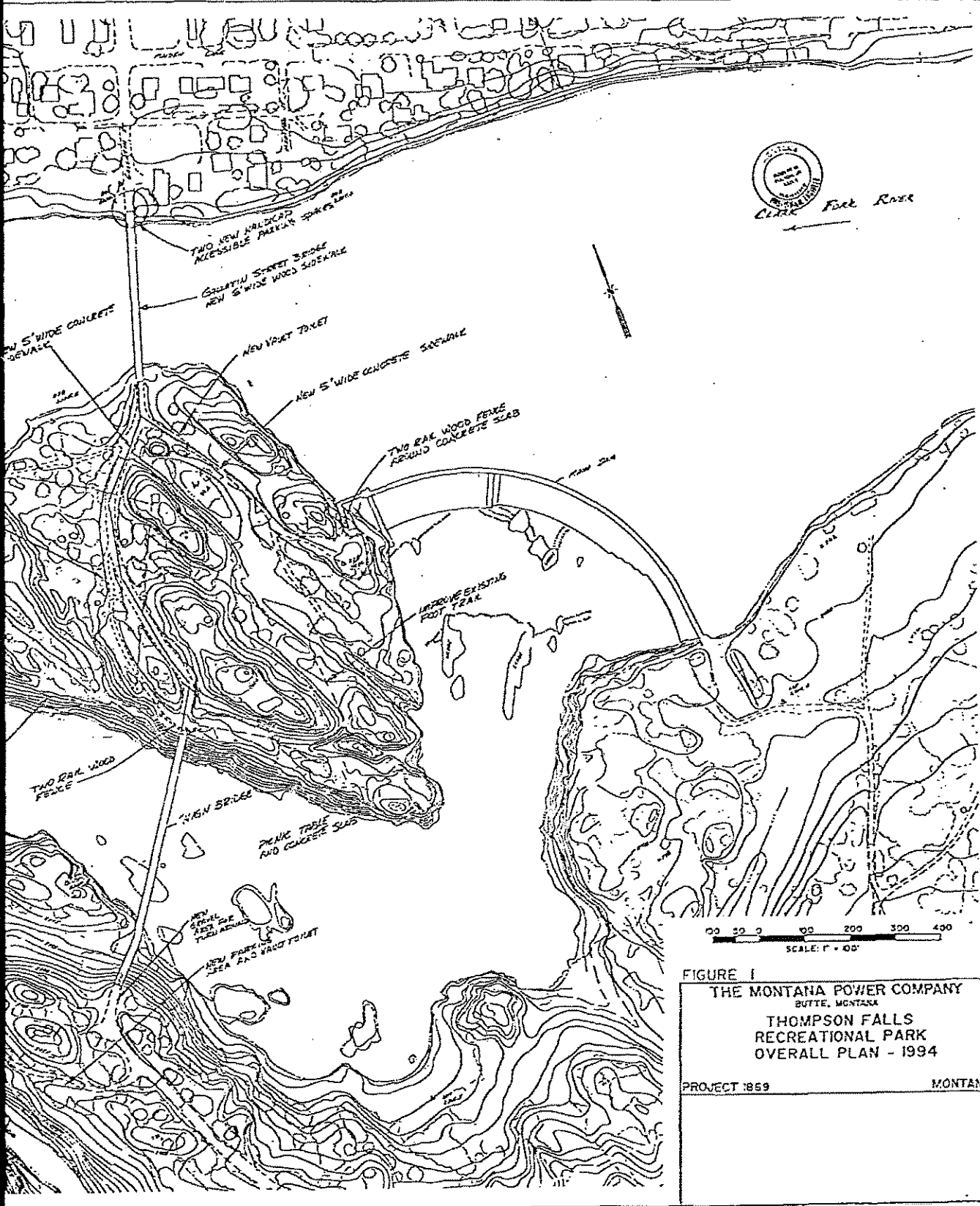
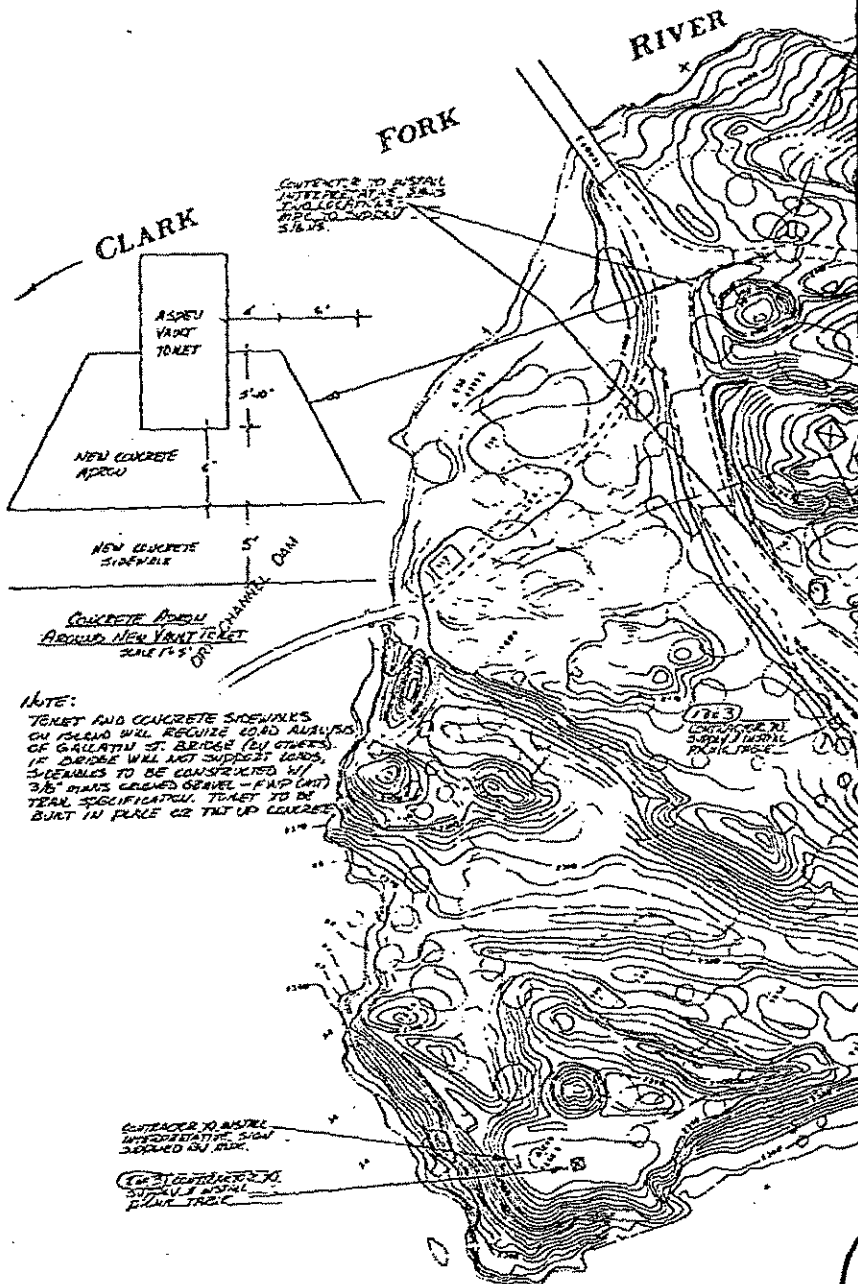


FIGURE 1
 THE MONTANA POWER COMPANY
 BUTTE, MONTANA
 THOMPSON FALLS
 RECREATIONAL PARK
 OVERALL PLAN - 1994
 PROJECT 1859 MONTANA

43391-D15 SHEET 1

2027 0000

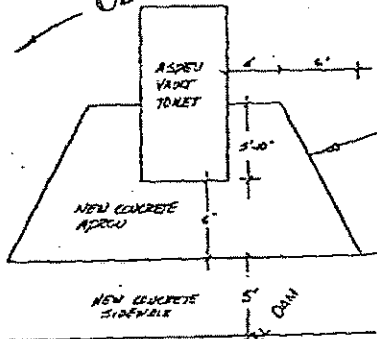


CLARK

FORK

RIVER

CONTRACTOR TO INSTALL INTERPRETIVE SIGN DEPENDING ON TIME

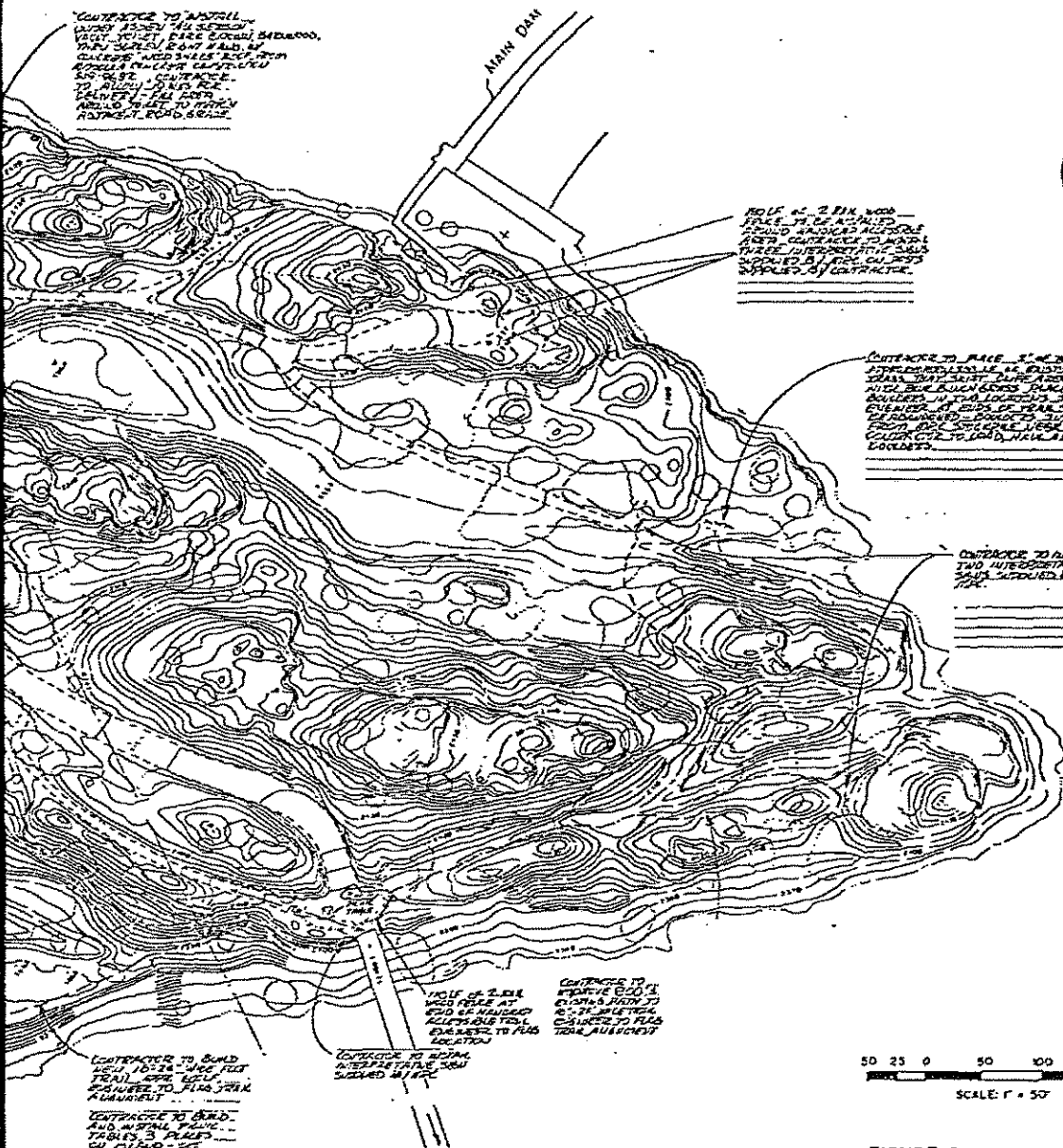


CONCRETE APPROACH
REQUIRE NEW VANT TONNET
SCALE 1/2" = 10'

NOTE:
TONNET AND CONCRETE SIDEWALKS ON ISLAND WILL REQUIRE ROAD ANALYSIS OF GRAVITY ST. BRIDGE (BY OTHERS) IF BRIDGE WILL NOT SUPPORT LOADS. SIDEWALKS TO BE CONSTRUCTED W/ 3/8" DIAM. CEMENT GRAVEL - FWD (INT) TYPICAL SIGNIFICANTLY TONNET TO BE BUILT IN PLACE OF TYPICAL CONCRETE

CONTRACTOR TO INSTALL INTERPRETIVE SIGN DEPENDING ON TIME

CONTRACTOR TO INSTALL 5000' LUMBER PILE DRIVE



CONTRACTOR TO INSTALL
 CURB 15" HIGH ALONG
 WEST SIDE OF ROAD 5428000.
 THIS CURB IS 2' 0" WIDE BY
 12" HIGH. JOINTS SHALL BE
 10' ON CENTER. CONTRACTOR
 TO PROVIDE ALL MATERIALS
 AND LABOR. SEE SHEET 3
 FOR DETAIL.

POLE # 2 2" DIA. WOOD
 POLES TO BE INSTALLED
 AT 10' ON CENTER ALONG
 AREA CONTRACTOR TO INSTALL
 THESE INTERMEDIATE POLES
 SUPPLIED BY CONTRACTOR.

CONTRACTOR TO MAINTAIN
 INTERMEDIATE POLES AT
 10' ON CENTER ALONG
 AREA CONTRACTOR TO MAINTAIN
 THESE INTERMEDIATE POLES
 SUPPLIED BY CONTRACTOR.

CONTRACTOR TO INSTALL
 TWO INTERMEDIATE
 POLES SUPPLIED BY
 CONTRACTOR.

POLE # 2 2" DIA.
 WOOD POLES AT
 10' ON CENTER
 ALONG AREA
 CONTRACTOR TO MAINTAIN
 THESE INTERMEDIATE
 POLES SUPPLIED BY
 CONTRACTOR.

CONTRACTOR TO BUILD
 CURB 15" HIGH ALONG
 WEST SIDE OF ROAD 5428000.
 THIS CURB IS 2' 0" WIDE BY
 12" HIGH. JOINTS SHALL BE
 10' ON CENTER. CONTRACTOR
 TO PROVIDE ALL MATERIALS
 AND LABOR. SEE SHEET 3
 FOR DETAIL.

CONTRACTOR TO MAINTAIN
 INTERMEDIATE POLES
 SUPPLIED BY CONTRACTOR.

SEE SHEET 7
 RE IMPROVEMENTS
 ON SOUTH SIDE

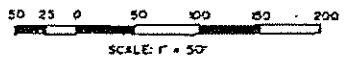
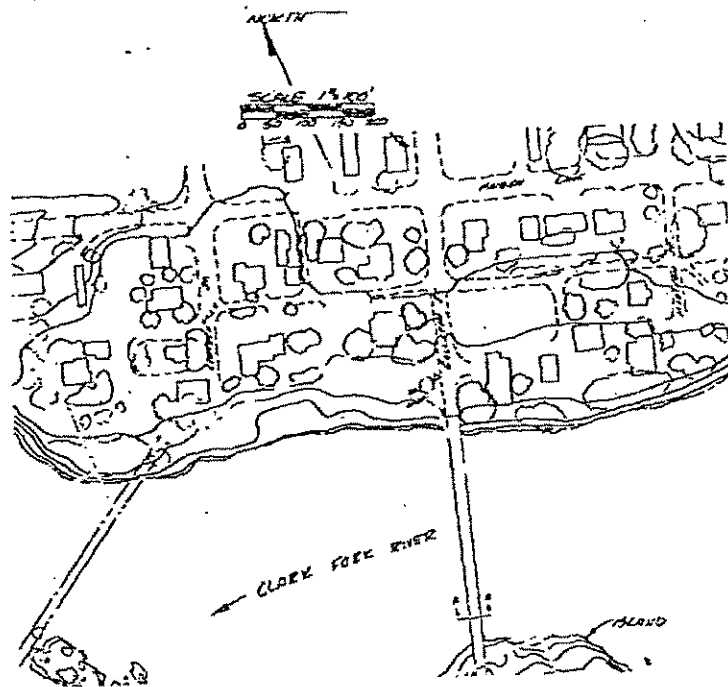


FIGURE 2

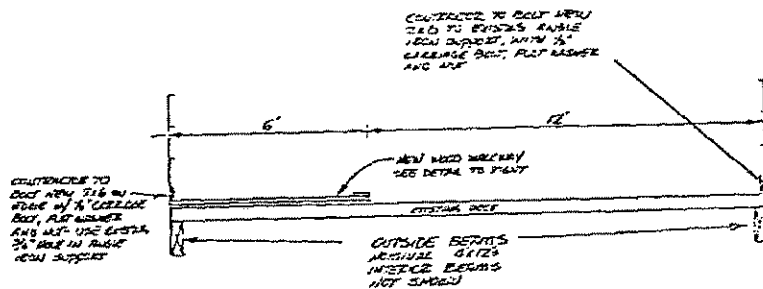
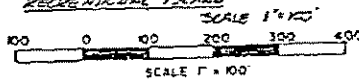
THE MONTANA POWER COMPANY
 BUTTE, MONTANA

THOMPSON FALLS
 RECREATIONAL PARK
 IMPROVEMENTS - 1994

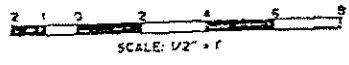
PROJECT 1269 MONTANA

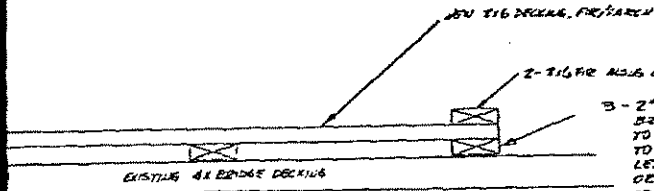


EXISTING BRIDGE TO THOMPSON FALLS
RECREATIONAL ISLAND



BRIDGE DECK SECTION A-A

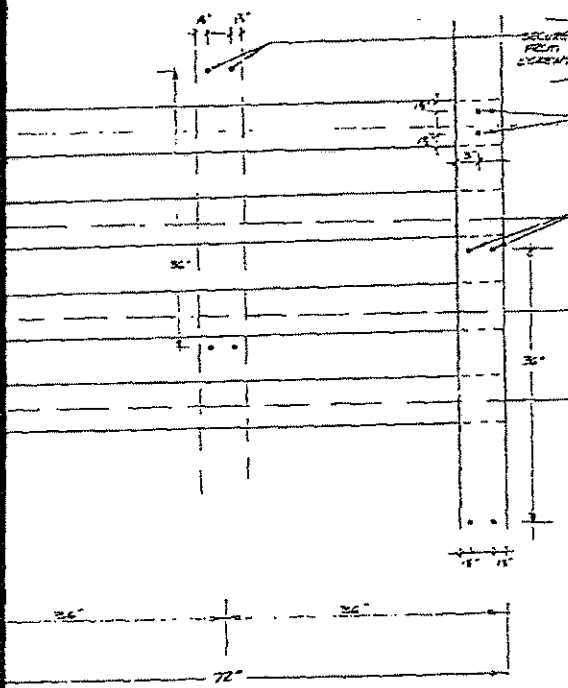




3 - 2x6" PRESSURE TREATED SECURED TO EXISTING BRIDGE W/ 4x BRIDGE DISCONTINUITIES IN DECK TO BE LEVELED TO ALLOW NEW 2x6 PT BOARDS TO FLATTEN TOP ELEVATIONS AT ALL JOINTS & 1/4" LEVELING MAY BE ACCOMPLISHED BY PLANING OR CHIPPING OFF HIGH SPOTS IN EXISTING DECKING OR SHIMMING NEW 2x6 PT BOARDS WITH REDWOOD SHIMS UP TO 3/8" THICK.

NEW WALKWAYS SHALL NOT BE FOR MORE THAN 0.25' VEGETATION UNLESS TO STREAM EDGE IS LAY ON TOP OF FLUSHED SURFACE

SECTION OF WALKWAY



SECURE TREATED 2x6x6x6 W/ 2x4x6x6x6 SCREWS FROM THE WOODWORKERS SIDE (SEE DETAIL) EDGE IN 2x6x6x6 SCREWS ON 2x6x6x6x6 AND SECOND EXISTING BRIDGE DECKING

SECURE 2x6 FRAMING TO TREATED 2x6 BELOW W/ 4x6x6x6x6 10 6x6x6x6 SCREWS AT EACH CONNECTION POINT (B)

SECURE TWO OUTSIDE 2x6x6x6x6 "GIRL" BOARDS W/ 2x4x6x6x6x6 10 6x6x6x6x6 25' O.C.

- NOTES:
1. ALL WOOD FOR FENCIBLE TO BE PRESSURE TREATED FENCE
 2. WOOD SPACING TO BE COORDINATED IN 10' LONG SPACERS SECURED TO BUILDS W/ 4, 6" LONG GALVANIZED LAG SCREWS

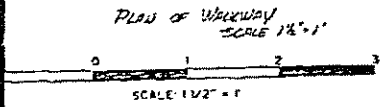
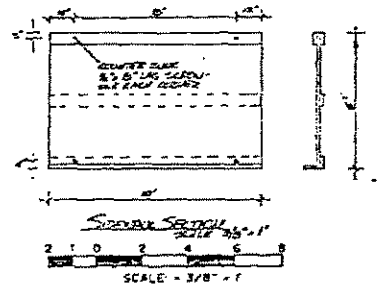


FIGURE 3

THE MONTANA POWER COMPANY
BUTTE, MONTANA

THOMPSON FALLS
RECREATIONAL PARK
IMPROVEMENTS - 1994

PROJECT 1869 MONTANA

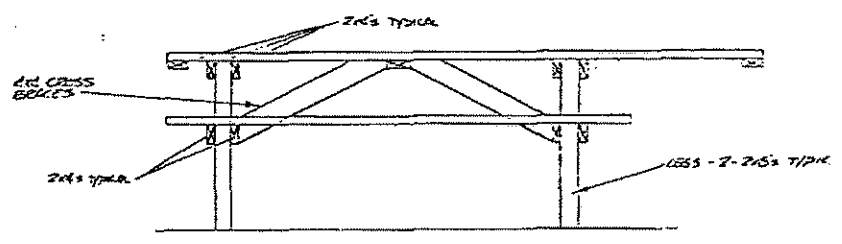
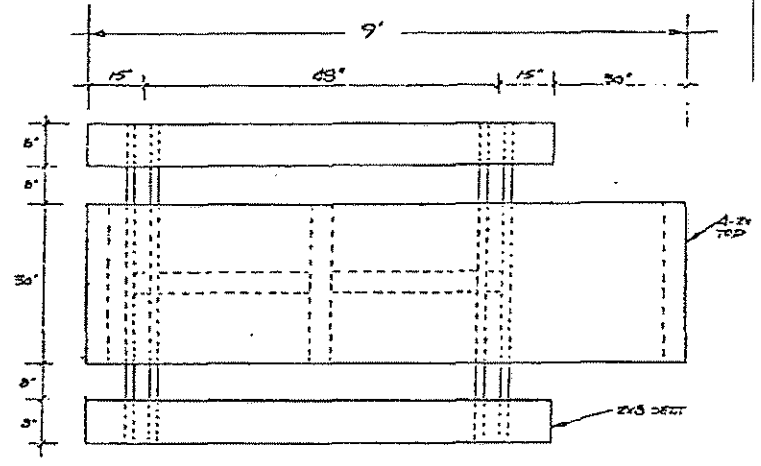


TABLE (3 REQUIRED)

- NOTES:
- 1) ALL WOOD FOR TABLE TO BE CONSR. GRADU OR BETTER REDWOOD
 - 2) ALL FASTENERS TO BE 3/8" GAL. CARTRIDGE BOLTS
 - 3) WOOD TO BE OILED W/ BOILED LINED OIL FOLLOWING CONSTRUCTION (SEPARATE)
 - 4) CONTRACTOR TO SUPPLY 3 TABLES
 - 5) CONTRACTOR TO SECURE TABLES W/ 6' LENGTH OF 2 1/2" DIA. TYP. SYSTEM 4 STEEL CHAIN LINKED TO CONCRETE FLOOR (SEE DETAIL THIS PAGE)
 - 6) CONTRACTOR TO SUPPLY 3- 1/2" DIA. UCLDS, H/ED FUNK, MODEL OR SLTAS-A-51

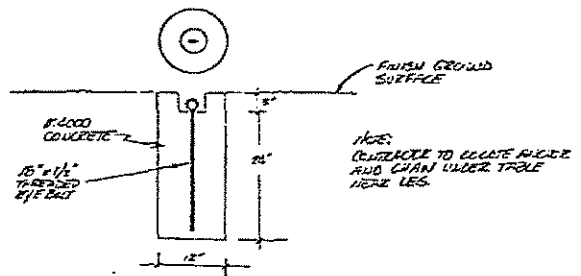
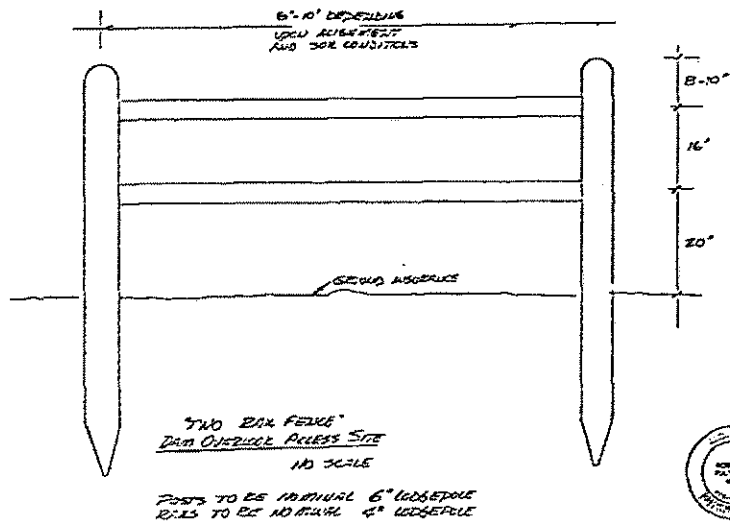
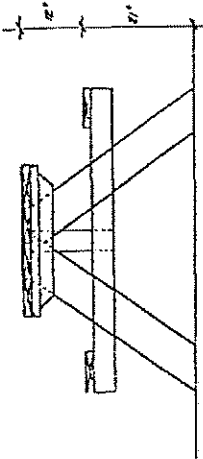


TABLE ANCHOR (3 REQ'D)



SCALE: NONE

FIGURE 4

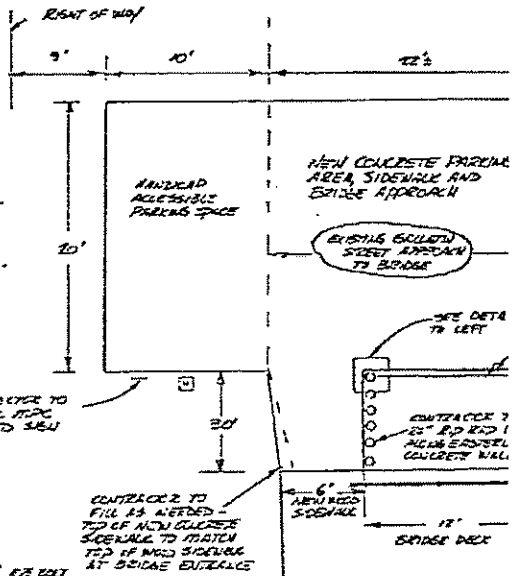
<p>THE MONTANA POWER COMPANY BUTTE, MONTANA</p> <p>THOMPSON FALLS RECREATIONAL PARK IMPROVEMENTS - 1994</p> <p>PROJECT 1869</p>

43391-D'S SHEET 4

CHW

NOTES RE PARKING SPACES, SIDEWALK AND BRIDGE APPROACH:

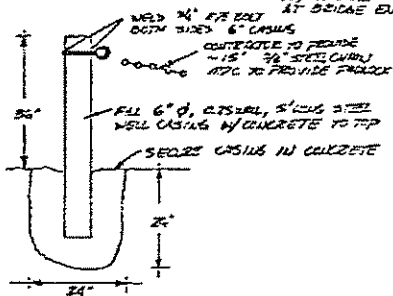
- 1) CONSTRUCTION OF PARKING SPACES AND CONCRETE ON BRIDGE DECK TO MEET CITY CONSTRUCTION STANDARDS
- 2) PER ALL AREAS WHERE CONCRETE FINISH SHALL BE PLACED, CONTRACTOR TO REMOVE 2" OF EXISTING FINISH OR SET AND PLACE 1" COMPACTED 3" FINISH BIT RUN SEAL. 6" - 2" CASING & 4" OF 4000 PORTLAND CONCRETE (4000 MPAS) SLAB. SLAB TO BE CAST IN NORMAL JOINT SQUARES @ 12' REDUCED JOINTS. ROUGH BRUSH FINISH, SLOPE TO EAST & WEST 1/8" FEET @ 12' RUN



CONTRACTOR TO INSTALL 11/2\"/>

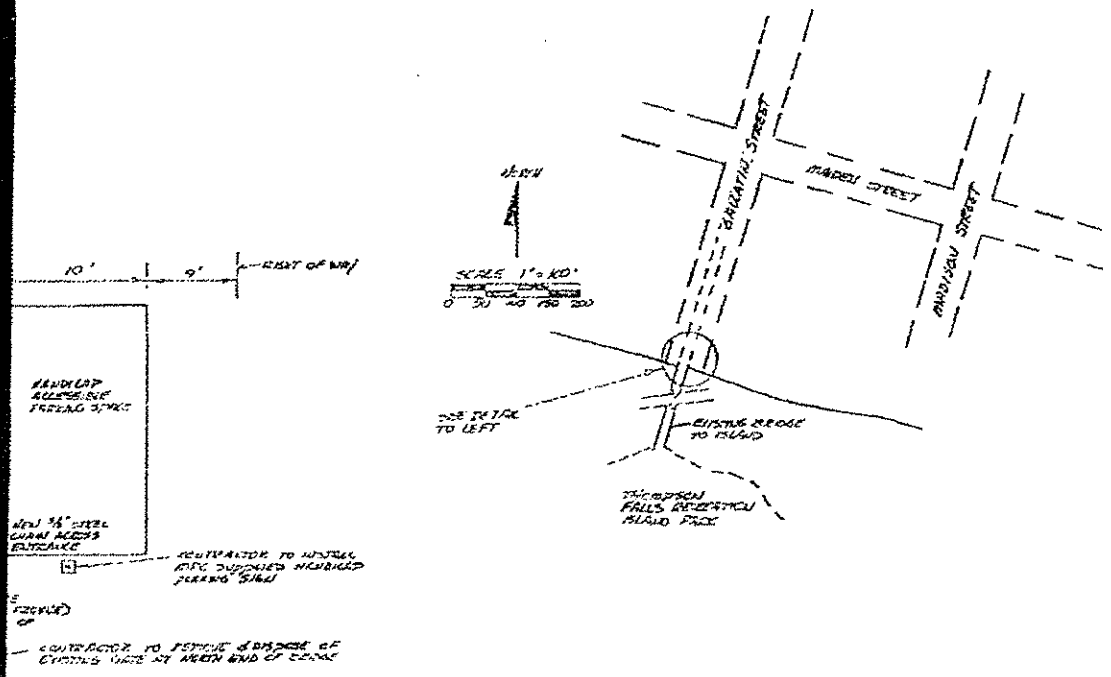
CONTRACTOR TO FILL AS NEEDED - TOP OF NEW CONCRETE SIDEWALK TO MATCH TOP OF EXISTING AT BRIDGE ENTRANCE

CONTRACTOR TO 2\"/>



POST AND CURB DETAIL AT BRIDGE ENTRANCE
1/8\"/>

PLAN - NEW BRIDGE APPROACH



NORTH
 SCALE 1" = 40'
 0' 20' 40' 60' 80'

10' 9' - RIGHT OF WAY

HANDLAP ASPHALT PAVING DRIVE
 NEW 3/4" STEEL CURB ACCESS ENTRANCE

CONTRACTOR TO INSTALL AND SUPPLY HIGHWAY PAVING SIGN

CONTRACTOR TO REMOVE BRIDGE OF EXISTING GATE AT WEST END OF DRIVE

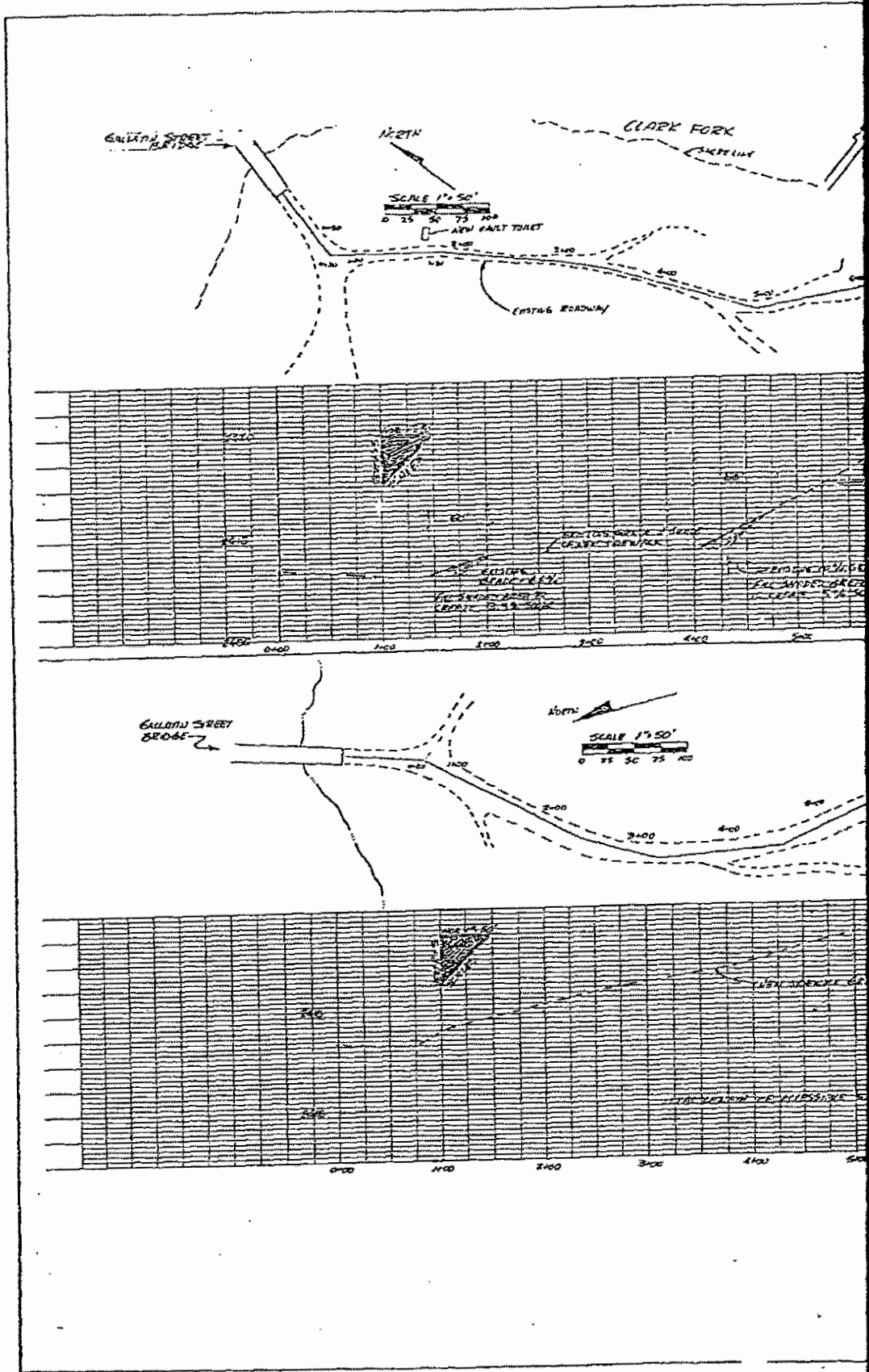


FIGURE 5
 THE MONTANA POWER COMPANY
 BUTTE, MONTANA
 THOMPSON FALLS
 RECREATIONAL PARK
 IMPROVEMENTS - 1994

PROJECT 1869

DATE

2035 000



2000' (40'x50') AREA
 WITHIN FENCE TO BE NEW
 CONCRETE SIDEWALK 4" THICK
 WITH 4" RADIUS TO 10' END
 WITH 1" RADIUS TO 10' END
 WITH 1" RADIUS TO 10' END
 WITH 1" RADIUS TO 10' END
 WITH 1" RADIUS TO 10' END

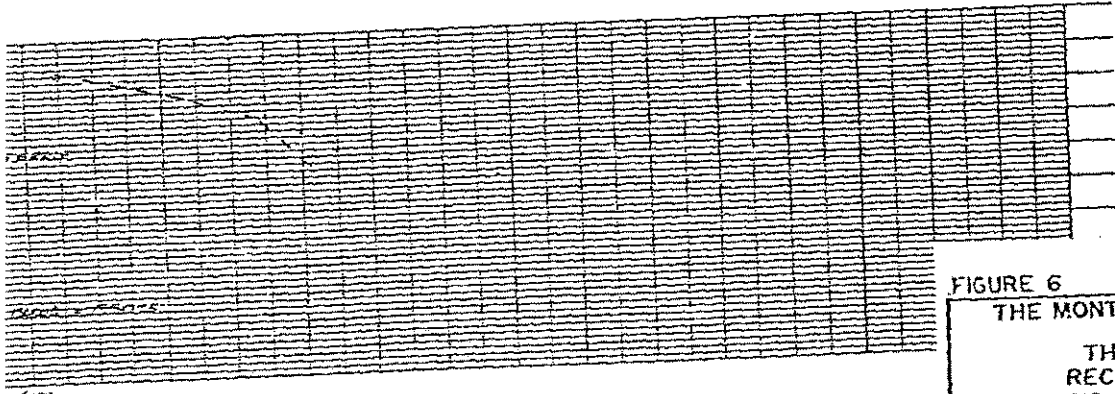
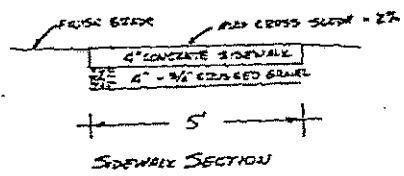
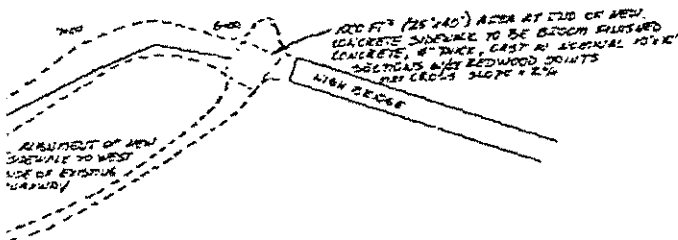
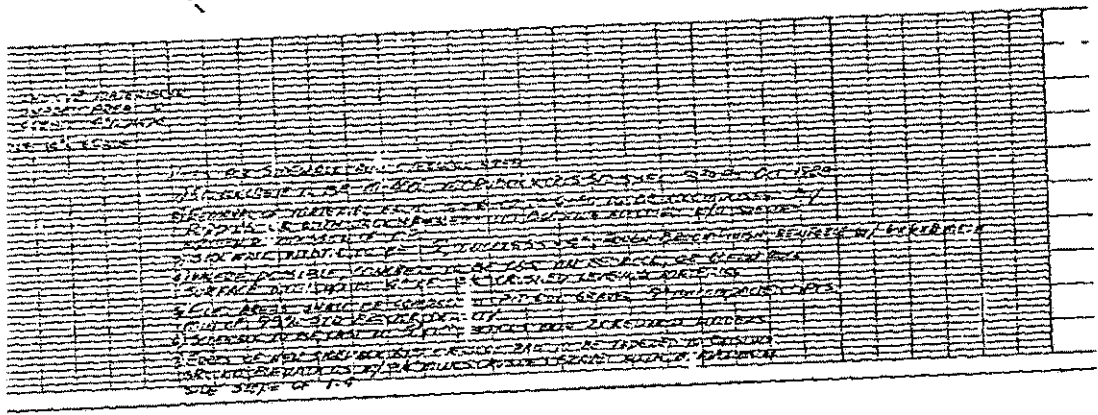


FIGURE 6
 THE MONTANA POWER COMPANY
 BUTTE, MONTANA
 THOMPSON FALLS
 RECREATIONAL PARK
 ISLAND ACCESSIBLE TRAILS
 IMPROVEMENTS - 1994
 PROJECT 1869 MONTANA

North

SCALE 1" = 100'
0 50 100 150 200

SEE SHEET 1
FOR ISLAND
IMPROVEMENTS

PIPE
PIECE

INSTALL OPEN "AL SEBON" TANT TANT
FROM #35501A CONCRETE CONSTRUCTION,
DARK GRAY, BULKHEAD, TANT SCREEN,
TANT HULL, UNDERSTAND WITH
"CONCRETE WOOD SHAKE ROOF"

CONTRACTOR TO INSTALL
TWO FALTERN CONCRETE
FRONT'S ALONG
FRONT CONCRETE PILE
TABLES - DO NOT REMOVE
ANCHORS

NOTE: THIS SHEET DESCRIBES IMPROVEMENTS TO THE "SOUTH SHORE AREA". THESE IMPROVEMENTS ARE NOT CURRENTLY SCHEDULED TO BE IMPLEMENTED BUT WILL BE RECONSIDERED WHEN THE LONG TERM STATUS OF THE HIGH BRIDGE IS DETERMINED.

THOMPSON FALLS
 ATON ISLAND PARK
 "HIGH BRIDGE"
 NO MODIFICATIONS
 WERE MADE THIS CONTRACT

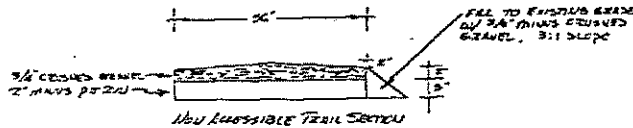
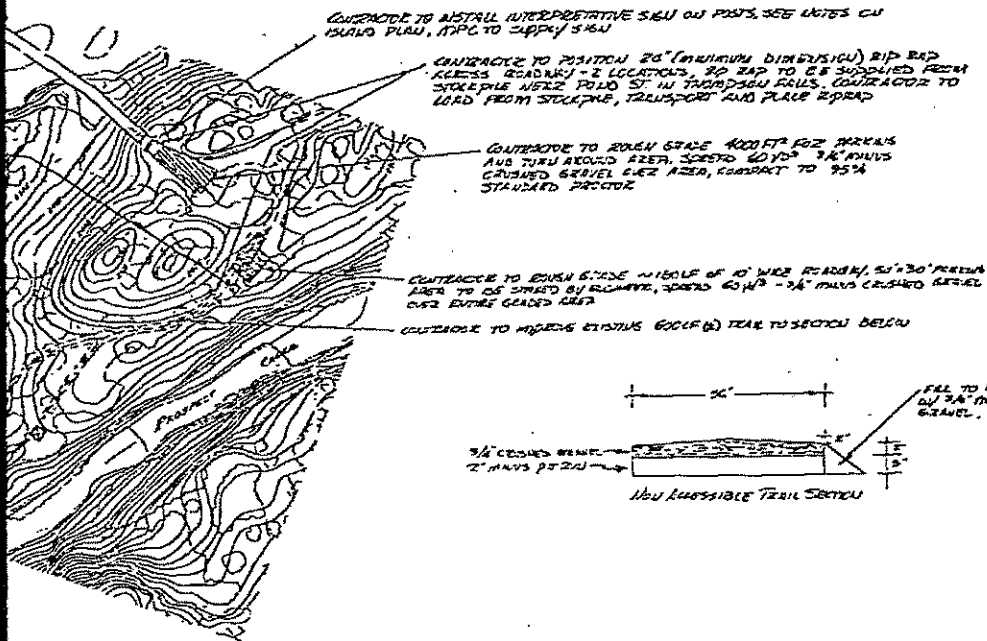


FIGURE 7

THE MONTANA POWER COMPANY
 BUTTE, MONTANA
 THOMPSON FALLS
 RECREATIONAL PARK
 SOUTH SHORE
 SUPPLEMENTAL SHEET

PROJECT 1869 1994 MONTANA

43391-D5 SHEET 7

2039 0000

LETTERS OF CONSULTATION

18094081T01

2040 0000



GENERAL OFFICES : 40 EAST BROADWAY, BUTTE, MONTANA 59701

MONTANA POWER COMPANY

July 21, 1993

Dear _____:

Earlier this year I sought comments from you about the Montana Power Company's revised plans to modify the access route to the proposed powerhouse, to relocate the spoils deposition area and to redraft the recreation plan at its Thompson Falls Hydroelectric Project, Federal Energy Regulatory Commission (FERC) No. 1869-003 located in Thompson Falls, Montana. After reviewing the revised plans and all of the comments, including but not limited by yours, the FERC amended MPC's operating license and issued an order approving the access road relocation.

As part of the order, FERC specified MPC "shall file a revised report on recreation resources detailing its proposal for recreation development in lieu of development of Island Park by April 1, 1994, for Commission approval. The report shall include documentation of consultation with the United States Forest Service, the City of Thompson Falls, the Montana Department of Fish, wildlife and parks, Sanders County, the Sanders County Economic Development Corporation and the National Park Service. The Commission reserves the right to make changes to MPC's plan."

We have scheduled a meeting to begin the planning process for the new recreation development. The meeting will be held in the Sanders County Courthouse courtroom, located in Thompson Falls at 1:30 p.m. on Monday, August 23, 1993.

Your participation in the planning process is greatly appreciated by MPC and should help ensure the revised recreation plan will meet the community's and the public's needs. I have enclosed a copy of the mailing list for your information.

If you have any questions, please feel free to call me at (406) 723-5421.

Sincerely,

Elvin Fitzhugh
Coordinator, Land Use
and Recreation Resources

EF/st

Enclosure

cc: Dan Hayes - FERC

2/93225T03

TELEPHONE 406/723-5421 • FACSIMILE 406/496-5059

2041 0000

Thompson Falls Hydroelectric Project,
Federal Energy Regulatory Commission No. 1869-003
Mailing List

Mark Childress
Plains Ranger District
U.S. Forest Service
P.O. Box 429
Plains, MT 59859

Larry Ward, Mayor
City of Thompson Falls
P.O. Box 263
Thompson Falls, MT 59873

Dan Vincent, Regional Supervisor
Region 1
Montana Department of Fish,
Wildlife and Parks
490 North Median Road
Kalispell, MT 59901

Cherrie Hooten
Sanders County Commissioner
Sanders County
P.O. Box 519
Thompson Falls, MT 59873

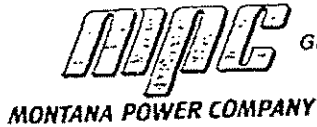
Bob Fletcher, Secretary
Sanders County Economic Development Corp.
First State Bank of Thompson Falls
P.O. Box 638
Thompson Falls, MT 59873

Michael Duwe
Division of Planning and Compliance
National Park Service
Rocky Mountain Regional Office
12795 West Alameda Parkway
P.O. Box 25287
Denver, CO 80225-0287

187 93702G02

T-Falls Meeting 8/23/93

Name	Representing	Phone #
Cherie Hosten	Sanders County	827-4391
Larry Hard	City of Falls	827-3277
Bruce Sterling	FWP SCLDC	827-4389
BOB FLETCHER		827-3565
Fred Haas	USFS. Plains/Thompson Falls RD	826-3821 752-5501
Dusty Watkins	FWP	(home) 752-0007
Pat [unclear]	MPC	723-5421
Elvin [unclear]	MPC	723-5421
NORM RESLAR	SANDERS CO	827-3137



GENERAL OFFICES : 40 EAST BROADWAY, BUTTE, MONTANA 59701

September 21, 1993

Dear _____:

As per our discussions on August 23, 1993, we will hold our second meeting in Thompson Falls on Monday, September, 27, 1993. The meeting will be held in the Sanders County Courthouse Courtroom at 1:30 p.m. Please review the draft drawing for the revised recreation plan so we can discuss it at the meeting.

If you have any questions please feel free to call me at (406) 723-5421, extension 3263

Sincerely

Elvin Fitzhugh
Coordinator, Land Use
and Recreation Resources

EF/st

Enclosure

cc: Dan Hays - FERC

493263T01-7

TELEPHONE 406/723-5421 • FACSIMILE 406/496-5099

2044 0000

Thompson Falls Hydroelectric Project,
Federal Energy Regulatory Commission No. 1869-003
Mailing List

Mark Childress
Plains Ranger District
U.S. Forest Service
P.O. Box 429
Plains, MT 59859

Larry Ward, Mayor
City of Thompson Falls
P.O. Box 263
Thompson Falls, MT 59873

Dan Vincent, Regional Supervisor
Region 1
Montana Department of Fish,
Wildlife and Parks
490 North Median Road
Kalispell, MT 59901

Cherrie Hooten
Sanders County Commissioner
Sanders County
P.O. Box 519
Thompson Falls, MT 59873

Bob Fletcher, Secretary
Sanders County Economic Development Corp.
First State Bank of Thompson Falls
P.O. Box 638
Thompson Falls, MT 59873

Michael Duwe
Division of Planning and Compliance
National Park Service
Rocky Mountain Regional Office
12795 West Alameda Parkway
P.O. Box 25287
Denver, CO 80225-0287

1109910002

Sanders County

State of Montana



September 27, 1993

Mr. Fitzhugh
Montana Power Company

Dear Mr. Fitzhugh:

I am sorry I will be unable to attend your meeting today. I will be acting as Sanders County Representative for a Three County Regional RC&D meeting at the Rimrock today. No information was forthcoming on the Highbridge that I am aware of.

Again I am sorry I will be unable to attend today. If you have any questions or information for me, please feel free to call me at 827-4391.

Sincerely,

Cherie Hooten, Chairman
Board of County Commissioners
Sanders County, Montana



GENERAL OFFICES: 40 EAST BROADWAY, BUTTE, MONTANA 59701

MONTANA POWER COMPANY

February 10, 1994

Dear _____:

We have been in the process of developing the plans for the Thompson Falls Island Recreation Area and have scheduled a meeting to discuss them next week. The meeting will be held in the Sanders County Courthouse Courtroom, located in Thompson Falls at 1:30 p.m. on Thursday, February 17, 1994.

Your participation in the planning process is greatly appreciated and should help insure the recreation plan meets the community's and the public's needs. I have enclosed a copy of the participant mailing list for your information.

If you have any questions, please feel free to call me at (406) 723-5454, extension 73263.

Sincerely,

Elvin Fitzhugh
Coordinator, Land Use
and Recreation Resources

EF/st

Enclosures

cc: Dan Hays - FERC

Thompson Falls Hydroelectric Project
Federal Energy Regulatory Commission No. 1869-003
Mailing List

Fred Haas
Plains Ranger District
U.S. Forest Service
P.O. Box 429
Plains, MT 59859

Larry Ward, Mayor
City of Thompson Falls
P.O. Box 263
Thompson Falls, MT 59873

Dan Vincent, Regional Supervisor
Region 1
Montana Department of Fish,
Wildlife and Parks
490 North Median Road
Kalispell, MT 59901

Cherrie Hooten, Commissioner
Sanders County
P.O. Box 519
Thompson Falls, MT 59873

Norm Resler, Commissioner
Sanders County
P.O. Box 519
Thompson Falls, MT 59873

Bob Fletcher, Secretary
Sanders County Economic Development Corp.
First State Bank of Thompson Falls
P.O. Box 638
Thompson Falls, MT 59873

Michael Duwe
Division of Planning and Compliance
National Park Service
Rocky Mountain Regional Office
12795 West Alameda Parkway
P.O. Box 25287
Denver, CO 80225-0287

T-Falls

Meeting

2/17/94

Name

Representing

Phone #

Elvin Fitzhugh	MPC	723-5421
Andy Watkins	FWP	752-5501
Larry Winkworth	City of T.F.	827-3542
Tom Eggenberger	" " "	3421
Fred News	USFS Plain/Thompson Falls RD	826-3821
BOB FLETCHER	SANDERS CITY EDC	827-3565
Larry Ward	City of T Falls	827-3277
Robert K Bridgman	MPCO Hydro Plant	827 4755
BOB FULTON	CONSULTANT	8539217



GENERAL OFFICES : 40 EAST BROADWAY, BUTTE, MONTANA 59701

MONTANA POWER COMPANY

February 24, 1994

Dear _____:

As per our discussions during the February 17, 1994 meeting, I am enclosing a copy of the final plans for the Thompson Falls Recreation Development. Hopefully, all of the issues that have been discussed are addressed in the plans. If we have overlooked something you are concerned with, please let me know immediately. Otherwise, please provide me with your concurrence by March 9, 1994. This will allow us time to file the plans with the Federal Energy Regulatory Commission by the April 1, 1994 deadline.

Again, thank you for your time and effort in helping us develop a plan that will meet the public's needs in the Thompson Falls area. If you have any questions, please feel free to call me at (406) 723-5454, extension 73263.

Sincerely,

Elvin Fitzhugh
Coordinator, Land Use
and Recreation Resources

EF/st

Enclosure

cc: Dan Hays, FERC
Marty Watkins, MDFWP
Fred Haas, USFS

bcc: Jack Haffey
Don Sprague
Rick Walsh
Dave Sather
Pat Asay

Art Neill
Larry Thompson
Bob Covington
John Van Daveer
Mike Manion

Bill Rhoads
Bob Brickzin

294055701-1

TELEPHONE 406/723-5421 • FACSIMILE 406/496-5099

2050 0000

**Thompson Falls Hydroelectric Project
Federal Energy Regulatory Commission No. 1869-003
Mailing List**

Dick Smith, District Ranger
Plains Ranger District
U.S. Forest Service
P.O. Box 429
Plains, MT 59859

Larry Ward, Mayor
City of Thompson Falls
P.O. Box 263
Thompson Falls, MT 59873

Dan Vincent, Regional Supervisor
Region 1
Montana Department of Fish,
Wildlife and Parks
490 North Median Road
Kalispell, MT 59901

Cherrie Hooten, Commissioner
Sanders County
P.O. Box 519
Thompson Falls, MT 59873

Norm Resler, Commissioner
Sanders County
P.O. Box 519
Thompson Falls, MT 59873

Bob Fletcher, Secretary
Sanders County Economic Development Corp.
First State Bank of Thompson Falls
P.O. Box 638
Thompson Falls, MT 59873

Nathalie Powell
Division of Environmental
and Public Services
National Park Service
Rocky Mountain Regional Office
12795 West Alameda Parkway
P.O. Box 25287
Denver, CO 80225-0287

REVISED REPORT
ON
RECREATION RESOURCES

PROPOSAL FOR REVISED ISLAND,
HIGH BRIDGE AND SOUTH SHORE DEVELOPMENTS

THOMPSON FALLS HYDROELECTRIC DEVELOPMENT
FERC PROJECT NO. 1869-012

FEBRUARY, 1994

THE MONTANA POWER COMPANY
BUTTE, MONTANA

INTRODUCTION

The Montana Power Company (MPC) filed an application to amend its Thompson Falls Project License with the Federal Energy Regulatory Commission (FERC) on May 3, 1993. The proposed amendment identified an alternative access road and spoils area in respect to the new powerhouse project in lieu of those to be located on the island between the Main and Dry Channel dams. The amendment also required a change to article 404 of the license (the project recreation plan).

On May 21, 1993 the FERC ordered MPC to file a revised report on recreation resources detailing its proposal for recreation development in lieu of constructing Island Park as originally proposed (FERC, 1993). The revised report must be submitted to FERC by April 1, 1994.

Pursuant to the May 21, 1993 letter from FERC the MPC sought input from the City of Thompson Falls, Sanders County, the Sanders County Economic Development Corporation, the Montana Department of Fish, Wildlife and Parks, the US Forest Service, and the National Park Service regarding the appropriate recreation development in lieu of Island Park, which was to consist of a highly altered setting and urban park facilities. Refer to the attached letters.

The consensus during the meetings held on August 23, and September 27, 1993 and February 17, 1994 in Thompson Falls was to develop the island for public recreation in a manner similar to that originally proposed for Island Park. This new proposal, represented on the enclosed drawings, emphasizes the island's natural setting without the extensive restoration and developmental efforts that would have been required following the placement of spoils. Refer to Sheet 1 for an overview of the proposal. The consensus was also to contribute funds toward rehabilitation of the abandoned High Bridge or toward limited development of the area along the south shore of the river (South Shore). The decision to contribute funds toward rehabilitation of the abandoned High Bridge or toward limited development of the South Shore is dependent upon whether or not the local government and agencies rehabilitate the High Bridge.

PROPOSED RECREATION FACILITIES

Island Development

MPC proposes to develop a public recreation area on the island between its Main and Dry Channel dams. The primary focus will be on retaining the island's natural character, while at the same time providing the public with trail, interpretive, picnic and rest room facilities. The facilities will accommodate recreationists with disabilities. Spurs off the primary trail will lead to remote areas on the island and will not be

accessible to disabled recreationists due to the island's rugged natural terrain. Refer to Sheets 2 through 6 for details.

Pedestrian and bicycle access will be provided via the Gallatin Street Bridge on the north side of the island. Improvements on the bridge will include a six foot wide walkway to allow recreationists with disabilities access to the island.

General public parking will be provided along Gallatin Street, at the museum and county parking lot, located approximately two blocks northeast of the Gallatin Street Bridge. From there, pedestrians will be directed past the museum to the island park. Parking will be provided for recreationists with disabilities at the north end of the Gallatin Street Bridge.

High Bridge

MPC proposes to contribute up to \$20,000 toward the rehabilitation of the High Bridge as a means of providing pedestrian and bicycle access to the south side of the Clark Fork River. The local governments would utilize the contribution as a private match in seeking state and federal dollars through grants to rehabilitate the bridge. Preliminary cost estimates to rehabilitate the bridge range from approximately \$100,000 to over \$200,000. If the community does not to pursue the bridge rehabilitation by December 31, 1998, MPC's funding commitment will shift to the development on the south shore.

South Shore Development

The need for the South Shore development is dependent on whether or not the High Bridge is rehabilitated. That is, if the High Bridge is rehabilitated the public will have quick and easy pedestrian and bicycle access from Thompson Falls. This will allow the public use of the facilities on the island on their way to and from the South Shore. If the bridge is not rehabilitated access will remain as it is currently, which is primarily by automobiles.

Therefore, MPC proposes to develop the South Shore in lieu of a financial contribution to the High Bridge if the local government and respective agencies do not pursue rehabilitation of the bridge by December 31, 1998. Facilities will include a designated parking area, picnic tables and a rest room if the area is developed. Refer to Sheet 7 for details.

OPERATION AND MAINTENANCE OF THE PROPOSED FACILITIES

MPC will pursue a cooperative management agreement or contract with The City of Thompson Falls or Sanders County to operate and

maintain the Island Development and South Shore Development, if it is constructed. However, MPC will remain responsible for the proper operation and maintenance of the developments.

PROJECT BOUNDARY AND FACILITIES

The island on which MPC proposes the development is located between the Thompson Falls Project's Main and Dry Channel dams.

COSTS

Developmental

The following developmental cost estimates are in 1994 dollars and were provided by Bob Fulton, Civil Engineer, Polson, MT in February, 1994.

Island Development

The cost for constructing the Island Development is estimated to be approximately \$80,000.

High Bridge

MPC's contribution to the rehabilitation of the High Bridge is \$20,000. This contribution is dependent on the future decision to rehabilitate the bridge for pedestrian and bicycle access. If the community does not to pursue the bridge rehabilitation by December 31, 1998, MPC's funding commitment will shift to the development on the south shore.

South Shore Development

The cost for constructing the South Shore is estimated to be approximately \$17,200.

Operation and Maintenance

The following operation and maintenance costs are in 1994 dollars and will be adjusted in the future to reflect the actual costs of properly operating and maintaining the developments.

Island Development

MPC estimates the annual operation and maintenance costs for the Island Development to be approximately \$3,500.

High Bridge

MPC does not propose to contribute to the operation and maintenance of the High Bridge, which is owned by Sanders County.

South Shore Development

MPC estimates the annual operation and maintenance costs for the South Shore Development to be approximately \$2,000.

CONSTRUCTION SCHEDULE

The development on the island between the Main and Dry Channel dams will be completed within one year of completion of the expansion project, which is scheduled for 1996.

CONSULTATION LETTERS



GENERAL OFFICES : 40 EAST BROADWAY, BUTTE, MONTANA 59701

MONTANA POWER COMPANY

July 21, 1993

Dear _____:

Earlier this year I sought comments from you about the Montana Power Company's revised plans to modify the access route to the proposed powerhouse, to relocate the spoils deposition area and to redraft the recreation plan at its Thompson Falls Hydroelectric Project, Federal Energy Regulatory Commission (FERC) No. 1869-003 located in Thompson Falls, Montana. After reviewing the revised plans and all of the comments, including but not limited by yours, the FERC amended MPC's operating license and issued an order approving the access road relocation.

As part of the order, FERC specified MPC "shall file a revised report on recreation resources detailing its proposal for recreation development in lieu of development of Island Park by April 1, 1994, for Commission approval. The report shall include documentation of consultation with the United States Forest Service, the City of Thompson Falls, the Montana Department of Fish, wildlife and parks, Sanders County, the Sanders County Economic Development Corporation and the National Park Service. The Commission reserves the right to make changes to MPC's plan."

We have scheduled a meeting to begin the planning process for the new recreation development. The meeting will be held in the Sanders County Courthouse courtroom, located in Thompson Falls at 1:30 p.m. on Monday, August 23, 1993.

Your participation in the planning process is greatly appreciated by MPC and should help ensure the revised recreation plan will meet the community's and the public's needs. I have enclosed a copy of the mailing list for your information.

If you have any questions, please feel free to call me at (406) 723-5421.

Sincerely,

Elvin Fitzhugh
Coordinator, Land Use
and Recreation Resources

EF/st

Enclosure

cc: Dan Hayes - FERC

2/93225T03

TELEPHONE 406/723-5421 • FACSIMILE 406/496-5099

2058 0000

**Thompson Falls Hydroelectric Project,
Federal Energy Regulatory Commission No. 1869-003
Mailing List**

Mark Childress
Plains Ranger District
U.S. Forest Service
P.O. Box 429
Plains, MT 59859

Larry Ward, Mayor
City of Thompson Falls
P.O. Box 263
Thompson Falls, MT 59873

Dan Vincent, Regional Supervisor
Region 1
Montana Department of Fish,
Wildlife and Parks
490 North Median Road
Kalispell, MT 59901

Cherrie Hooten
Sanders County Commissioner
Sanders County
P.O. Box 519
Thompson Falls, MT 59873

Bob Fletcher, Secretary
Sanders County Economic Development Corp.
First State Bank of Thompson Falls
P.O. Box 638
Thompson Falls, MT 59873

Michael Duwe
Division of Planning and Compliance
National Park Service
Rocky Mountain Regional Office
12795 West Alameda Parkway
P.O. Box 25287
Denver, CO 80225-0287

T-Falls Meeting 8/23/93

Name	Representing	Phone #
Cherie Voster	Sanders County	827-4391
Larry Ward	City of T-Falls	827-3277
Bruce Sterling	FWP SLEDL	827-4389
BOB FLETCHER		827-3565
Fred Haas	USFS - Plains/Thompson Falls RD	826-3821 752-5501
Gerty Watkins	FWP	(home) 752-0007
Pat Hascall	MPE	723-5421
Elvin Feltner	MPC	723-5421
NORM RESLAR	SANDERS CO	827-3137



GENERAL OFFICES : 40 EAST BROADWAY, BUTTE, MONTANA 59701

September 21, 1993

Dear _____ :

As per our discussions on August 23, 1993, we will hold our second meeting in Thompson Falls on Monday, September, 27, 1993. The meeting will be held in the Sanders County Courthouse Courtroom at 1:30 p.m. Please review the draft drawing for the revised recreation plan so we can discuss it at the meeting.

If you have any questions please feel free to call me at (406) 723-5421, extension 3263

Sincerely

Elvin Fitzhugh
Coordinator, Land Use
and Recreation Resources

EF/st

Enclosure

cc: Dan Hays - FERC

4S3263T01-7

TELEPHONE 406/723-5421 • FACSIMILE 406/436-5099

2061 0000

**Thompson Falls Hydroelectric Project,
Federal Energy Regulatory Commission No. 1869-003
Mailing List**

Mark Childress
Plains Ranger District
U.S. Forest Service
P.O. Box 429
Plains, MT 59859

Larry Ward, Mayor
City of Thompson Falls
P.O. Box 263
Thompson Falls, MT 59873

Dan Vincent, Regional Supervisor
Region 1
Montana Department of Fish,
Wildlife and Parks
490 North Median Road
Kalispell, MT 59901

Cherrie Hooten
Sanders County Commissioner
Sanders County
P.O. Box 519
Thompson Falls, MT 59873

Bob Fletcher, Secretary
Sanders County Economic Development Corp.
First State Bank of Thompson Falls
P.O. Box 638
Thompson Falls, MT 59873

Michael Duwe
Division of Planning and Compliance
National Park Service
Rocky Mountain Regional Office
12795 West Alameda Parkway
P.O. Box 25287
Denver, CO 80225-0287



GENERAL OFFICES: 40 EAST BROADWAY, BUTTE, MONTANA 59701

MONTANA POWER COMPANY

February 10, 1994

Dear _____:

We have been in the process of developing the plans for the Thompson Falls Island Recreation Area and have scheduled a meeting to discuss them next week. The meeting will be held in the Sanders County Courthouse Courtroom, located in Thompson Falls at 1:30 p.m. on Thursday, February 17, 1994.

Your participation in the planning process is greatly appreciated and should help insure the recreation plan meets the community's and the public's needs. I have enclosed a copy of the participant mailing list for your information.

If you have any questions, please feel free to call me at (406) 723-5454, extension 73263.

Sincerely,

Elvin Fitzhugh
Coordinator, Land Use
and Recreation Resources

EF/st

Enclosures

cc: Dan Hays - FERC

2063 0000

**Thompson Falls Hydroelectric Project
Federal Energy Regulatory Commission No. 1869-003
Mailing List**

Fred Haas
Plains Ranger District
U.S. Forest Service
P.O. Box 429
Plains, MT 59859

Larry Ward, Mayor
City of Thompson Falls
P.O. Box 263
Thompson Falls, MT 59873

Dan Vincent, Regional Supervisor
Region 1
Montana Department of Fish,
Wildlife and Parks
490 North Median Road
Kalispell, MT 59901

Cherrie Hooten, Commissioner
Sanders County
P.O. Box 519
Thompson Falls, MT 59873

Norm Resler, Commissioner
Sanders County
P.O. Box 519
Thompson Falls, MT 59873

Bob Fletcher, Secretary
Sanders County Economic Development Corp.
First State Bank of Thompson Falls
P.O. Box 638
Thompson Falls, MT 59873

Michael Duwe
Division of Planning and Compliance
National Park Service
Rocky Mountain Regional Office
12795 West Alameda Parkway
P.O. Box 25287
Denver, CO 80225-0287

T-Falls Meeting 2/17/94

Name	Representing	Phone #
Elvin Fitzhugh	MPC	723-5421
Andy Watkins	FWP	752-5501
Larry Winkler	City of T.F.	827-3542
Tom Eggenberger	" " "	3421
Fred News	USFS Plain/Thompson Falls RD	826-3821
BOB FLETCHER	SANDERS CITY CDC	827-3565
Larry Ward	City of T Falls	827-3277
Robert K. Brubaker	MPCO Hydro Plant	827-4733
BOB FULTON	CONSULTANT	853-9217

DOCUMENT
FILMED ON
APERTURE
CARD

ACCESSION

NO: 9404040053

NUMBER OF

PAGES 7



United States
Department of
Agriculture

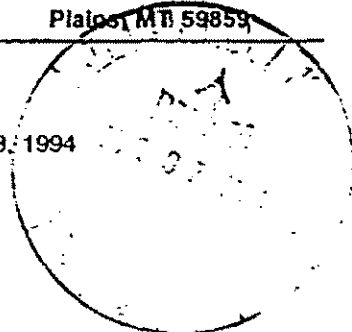
Forest
Service

Region 1

Plains/Thompson Falls
Ranger District
P.O. Box 429
Plains, MT 59859

Reply to: 2340

Date: MARCH 3, 1994



Emin Fitzhugh
Coordinator, Land Use and Recreation Resources
Montana Power Company
40 East Broadway
Butte MT, 59701

Dear Emin Fitzhugh:

This letter is in response to your request of 2/24/94 for comment and/or concurrence regarding the Recreation Development Plan at your Thompson Falls operations.

The Island and Dam complex at Thompson Falls is a very unique asset for the community. From a recreation perspective the Island provides "one-of-a-kind" experience for both people that live within the community and visitors to the area. It offers a setting, several minutes walk from downtown Thompson Falls, with sights and sounds of still and cascading water, opportunities to view wildlife close at hand and more distant views of the Clark Fork River canyon.

I concur with the overall management goals of providing for recreational day use for all non-motorized users in a manner that emphasizes the Island's natural setting while at the same time providing for operations of the dam facilities. The set of plans that accompanied your 2/24/94 letter provides design that will accomplish the overall goal mentioned above.

In review of the plans there are several comments that I would like to make:

- 1) The Overlook on the east side of the Island (overlooking the Main Dam) provides a major attraction and a place where people will spend time enjoying their surroundings. Addition of several park benches (w/back support) would add to peoples comfort and enjoyment of the overlook.
- 2) As people drive to the end of Gallatin Street they need to know where to park. The handicap parking is identified but parking for non-handicap users needs to be identified. A sign at the end of Gallatin Street directing them to the courthouse or museum parking areas would alleviate this problem.
- 3) The annual operations and maintenance costs seem to be on the light side of what I would expect for a site like this. A quick thumb nail sketch of what I would expect follows:



LABOR:

April-October...2 days(16hrs)/week = 's 60 days x \$50/day = 's \$3,000
November-March...1 day (8hrs)/week = 's 22 days x \$50/day = 's \$1,100

SUPPLIES:

Outhouse pumping \$400-800
Toilet paper.....\$ 200
Misc supplies; paint, cleaning supplies, rubber gloves, etc...\$ 300
TOTAL(approx) \$5,200

I also concur with your commitment of \$20,000 dollars for a limited time towards the restoration of the High Bridge in lieu of developing recreation facilities on the South Shore. The restoration of the bridge will provide a linkage between Thompson Falls and private as well as National Forest lands to the south of Thompson Falls. The commitment of \$20,000 will provide a solid basis for the community to seek matching funds or grants to aid in the restoration.

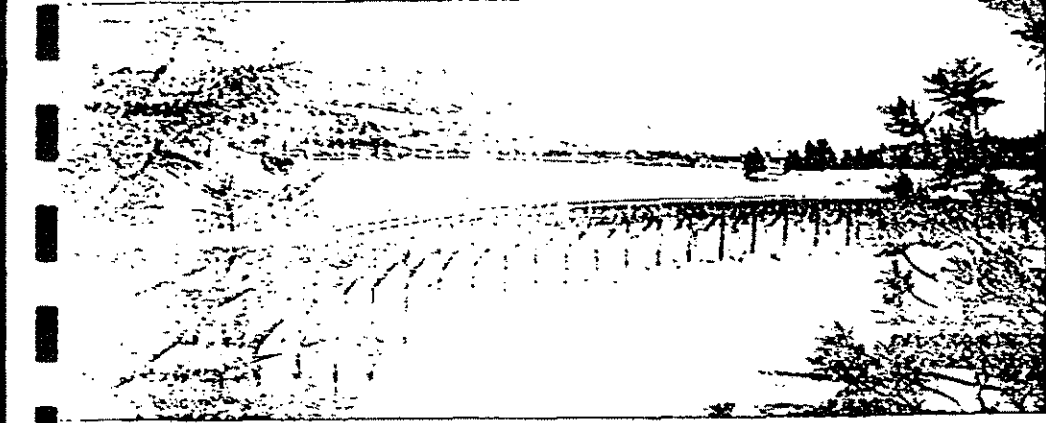
If the restoration of the High Bridge fails to materialize the alternate plans of developing the South Shore appear to be adequate to meet the demand for this area.

In closing I would like to say THANKS for the effort you have made involving the Plains/Thompson Falls Ranger District in this project.

Sincerely,


RICHARD A. SMITH
District Ranger





City of
Thompson Falls

P.O. BOX 99
THOMPSON FALLS, MT 59873
(406) 827-3527

JAN 25 1994 ALLEN AND TREASURER

March 8, 1994

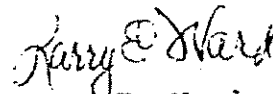
Elvin Fitzhugh, Coordinator
Land Use & Recreation Resources
Montana Power Company
40 East Broadway
Butte, MT 59701

Dear Elvin:

The plans for the Thompson Falls Recreation Development on the island are as we discussed. There is no objection by me to anything in the plans.

Thank you and all the Montana Power Company personnel for your efforts on this project. I look forward to the completion of the project and many years of future recreational use.

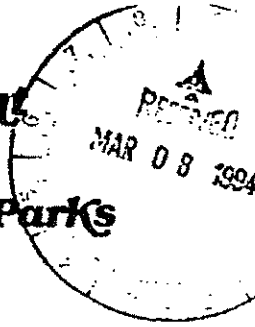
Sincerely,


Larry E. Ward
Mayor



2069 0000

**Montana Department
of
Fish, Wildlife & Parks**



490 N. Meridian
Kalispell, MT 59901
(406) 752-5501
Fax: (406) 257-0349
Ref: MW081.94
March 7, 1994

Elvin Fitzhugh
Coordinator, Land Use and Recreation Resources
Montana Power Company
40 East Broadway
Butte, MT 59701

Dear Speed:

I have taken the plans for the island at Thompson Falls to Fisheries and Wildlife, as well as examining it in parks. We are well satisfied with the direction this plan is taking.

Wildlife has recommended that some small signs be installed on the island identifying trees and plant species. Another alternative would be small numbers, with a brochure available that people could use to match the numbers with the information on the brochure.

I am also including specifications for the steel fencing we are using at many of our sites. We find the steel fencing lasts longer, requires less maintenance and is much more vandal resistant. It is attractive, and I would recommend it instead of wood fencing around the overlooks on the island.

Thanks Speed, call if you have any questions.

Sincerely,

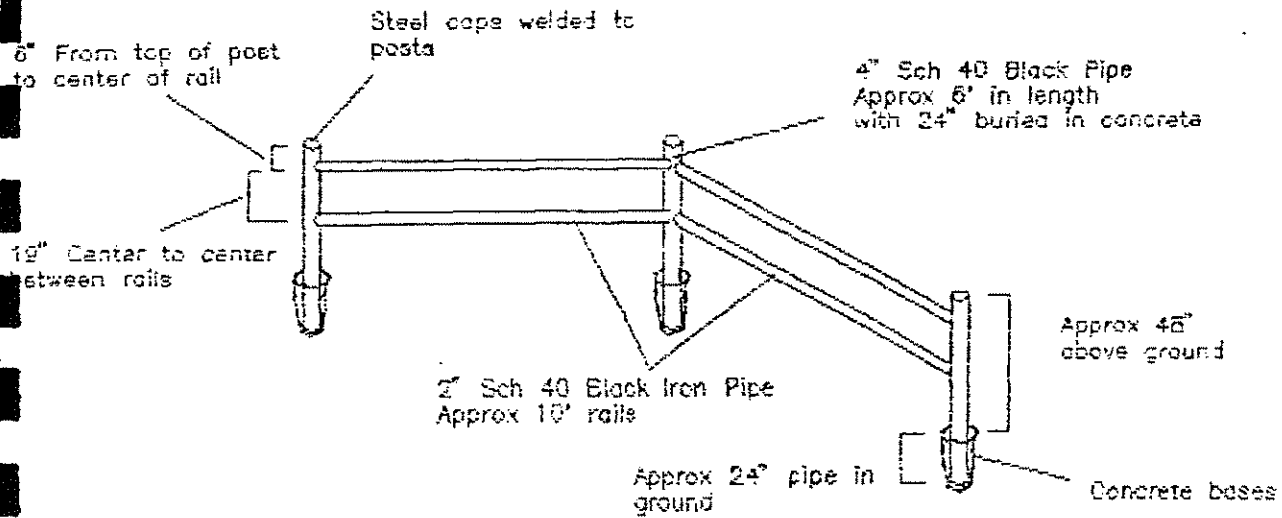
Marty Watkins
Marty Watkins
District Manager
Lone Pine Park District

/nb

Enclosure

Steel Fence Design

4/1/71
All Welded Construction
Approx Cost 10⁰⁰ PER LIN FT.



Design by: Fat Byrnes, Marie Phillips
Region One Parks

Sanders County

State of Montana



March 10, 1994

Elvin Fitzhugh
Montana Power Company
40 East Broadway
Butte, Montana 59701

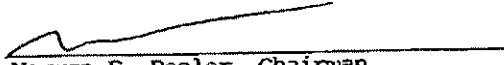
Dear Elvin:

After reviewing your "proposal for revised island, high bridge and South shore developments," the Sanders County Board of Commissioners agree that this proposal is an excellent way to access and maintain an area that can be utilized by our residents.

We are pleased with the promised funds earmarked toward either the rehabilitation of the high bridge or development of the South shore and appreciate your attention in this matter.

Sincerely,

BOARD OF COUNTY COMMISSIONERS
Sanders County, Montana


Norman E. Resler, Chairman


Cherie Hooten, Member


William E. Massey, Member

P.O. Box 519, 1111 Main St., Thompson Falls, MT 59873 • (406) 827-4391 FAX: (406) 827-4388

2072 0000

Sanders County Economic Development Corporation

March 4, 1994

Montana Power Company
40 East Broadway
Butte, MT 59701

Attn: Elvin Fitzhugh
Coordinator, Land Use
and Recreation Resources

Re: Recreation Plan
Thompson Falls Hydroelectric Development
FERC Project #1869-012

Dear Elvin:

This letter is in response to your February 24, 1994 letter which included your February, 1994 proposal for revised island, high bridge and south shore developments.

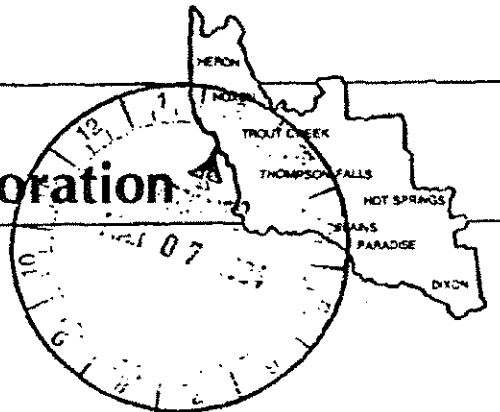
I have reviewed the report and related issues with directors of the Sanders County Economic Development Corporation.

Sanders County Economic Development Corporation concurs with the proposal. We believe it accurately reflects the consensus reached by our group and other commentors on an appropriate balance between the goals of enhancing recreational opportunities while minimizing the disturbance of the area's natural features.

We are aware that the budget for island development is relatively modest. We don't feel, however, that any necessary or appropriate elements of the island plan are being omitted because of financial constraints. It is the community consensus that the island should remain more or less in its natural state.

We are also aware of Montana Power's support of a multi agency planning effort for the entire Clark Fork River Corridor in Western Montana. We are pleased to see that the power company's concern is extending beyond the portion of the river physically affected by its dam. We would welcome the opportunity to provide any local perspective or assistance which might facilitate the planning process.

- P.O. Box 414 • Phone/FAX (406) 741-3754
Hot Springs, Montana 59845

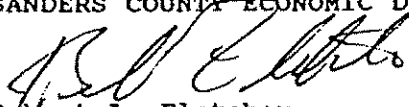


2972 0000

Montana Power Company
March 2, 1994
Page 2

Very truly yours,

SANDERS COUNTY ECONOMIC DEVELOPMENT CORPORATION


Robert L. Fletcher
Secretary

RLF/pw