

ORIGINAL <sup>N</sup>



GENERAL OFFICES : 40 EAST BROADWAY, BUTTE, MONTANA 59701

MONTANA POWER COMPANY

March 24, 1994

MPCo-THO-0855

Ms Lois D. Cashell  
Secretary  
Federal Energy  
Regulatory Commission  
425 N Capitol Street  
Room 9310  
Washington, DC 20426

FILED  
FEDERAL ENERGY REGULATORY  
COMMISSION  
94 MAR 29 AM 9:32

RE : The Montana Power Company  
Project No. ~~1869-012~~ 019  
Thompson Falls Project

Dear Ms. Cashell:

Submitted herewith are the original and eight copies of the Revised Report on Recreation Resources for the Montana Power Company's Thompson Falls Project, Federal Energy Regulatory Commission Project No. 1869-012. The revised plan is being submitted in accordance with Article 404 of the Order Approving Access Road Relocation Plan and Amending License, Issued May 21, 1993.

Sincerely,

Larry D. Thompson  
Manager  
Power Generation

LDT/sv

Enclosures

1-10

TELEPHONE 406/723-5421 • FACSIMILE 406/496-5099

FERO DOCKETED

MAR 28 1994

**THOMPSON FALLS RECREATION RESOURCES**

**TABLE OF CONTENTS**

	<b><u>PAGE NO.</u></b>
<b>1.0 INTRODUCTION . . . . .</b>	<b>1</b>
<b>2.0 PROPOSED RECREATION DEVELOPMENT . . . . .</b>	<b>2</b>
<b>3.0 PROPOSED RECREATION FACILITIES . . . . .</b>	<b>3</b>
<b>3.1 Island Development . . . . .</b>	<b>3</b>
<b>3.2 High Bridge . . . . .</b>	<b>3</b>
<b>3.3 South Shore Development . . . . .</b>	<b>3</b>
<b>4.0 OPERATION AND MAINTENANCE OF THE PROPOSED     FACILITIES . . . . .</b>	<b>5</b>
<b>5.0 PROJECT BOUNDARY AND FACILITIES . . . . .</b>	<b>6</b>
<b>6.0 COSTS . . . . .</b>	<b>7</b>
<b>6.1 Development . . . . .</b>	<b>7</b>
<b>6.1.1 Island Development . . . . .</b>	<b>7</b>
<b>6.1.2 High Bridge . . . . .</b>	<b>7</b>
<b>6.1.3 South Shore Development . . . . .</b>	<b>7</b>
<b>6.2 Operation and Maintenance . . . . .</b>	<b>7</b>
<b>6.2.1 Island Development . . . . .</b>	<b>7</b>
<b>6.2.2 High Bridge . . . . .</b>	<b>7</b>
<b>6.2.3 South Shore Development . . . . .</b>	<b>7</b>
<b>7.0 CONSTRUCTION SCHEDULE . . . . .</b>	<b>8</b>

**FIGURES**

**LETTERS OF CONSULTATION**

## **2.0 PROPOSED RECREATION DEVELOPMENT**

The consensus during the meetings held on August 23, 1993, September 27, 1993 and February 17, 1994 in Thompson Falls was to develop the island for public recreation in a manner similar to that originally proposed for Island Park. The proposal, represented on the enclosed drawings, emphasizes the island's natural setting without the extensive restoration and developmental efforts that would have been required following the placement of spoils. Refer to Figure 1 for an overview of the proposal. The consensus was also to contribute funds toward rehabilitation of the abandoned High Bridge or toward limited development of the area along the south shore of the river (South Shore). The decision to contribute funds toward rehabilitation of the abandoned High Bridge or toward limited development of the South Shore is dependent upon whether or not the local government and agencies rehabilitate the High Bridge.

Measures will be taken as appropriate to protect elements of the island's cultural resource during project construction. For example, the alignment of the trail spurs leading from the primary access trails may vary slightly from those indicated in the drawings. These activities will occur during the initial "laying-out" of the project prior to construction.

### **3.0 PROPOSED RECREATION FACILITIES**

#### **3.1 Island Development**

MPC proposes to develop a public recreation area on the island between its Main and Dry Channel dams. The primary focus will be on retaining the island's natural character, while at the same time providing the public with trail, historic and natural interpretive, picnic and rest room facilities, and park benches at the overlooks. The facilities will accommodate recreationists with disabilities. Spurs off the primary trail will lead to remote areas on the island and will not be accessible to disabled recreationists due to the island's rugged natural terrain. Refer to Figures 2 through 6 for details.

Pedestrian and bicycle access will be provided via the Gallatin Street Bridge on the north side of the island. Improvements on the bridge will include a six foot wide walkway to allow recreationists with disabilities access to the island.

General public parking will be identified and provided along Gallatin Street, at the museum and county parking lot, located approximately two blocks northeast of the Gallatin Street Bridge. From there, pedestrians will be directed with signs, past the museum to the island park. Parking will be provided for recreationists with disabilities at the north end of the Gallatin Street Bridge.

#### **3.2 High Bridge**

MPC proposes to contribute up to \$20,000 toward the rehabilitation of the High Bridge as a means of providing pedestrian and bicycle access to the south side of the Clark Fork River. The local governments would utilize the contribution as a private match in seeking state and federal dollars through grants to rehabilitate the bridge. Preliminary cost estimates to rehabilitate the bridge range from approximately \$100,000 to over \$200,000. If the community does not pursue the bridge rehabilitation by December 31, 1998, MPC's funding commitment will shift to the development on the south shore. MPC will remain in contact with Sanders County pertaining to the status of the High Bridge.

#### **3.3 South Shore Development**

The need for the South Shore development is dependent on whether or not the High Bridge is rehabilitated. That is, if the High Bridge is rehabilitated the public will have quick and easy pedestrian and bicycle access from Thompson Falls. This will allow the public use of the facilities on the island on their way to and from the South Shore. If the bridge is not rehabilitated access will remain as it is currently, which

is primarily by automobiles.

Therefore, MPC proposes to develop the South Shore in lieu of a financial contribution to the High Bridge if the local government and respective agencies do not pursue rehabilitation of the bridge by December 31, 1998. Facilities will include a designated parking area, picnic tables and a rest room if the area is developed. Refer to Figure 7 for details.

#### **4.0 OPERATION AND MAINTENANCE OF THE PROPOSED FACILITIES**

MPC will pursue a cooperative management agreement or contract with The City of Thompson Falls or Sanders County to operate and maintain the Island Development and South Shore Development, if it is constructed. However, MPC will remain responsible for the proper operation and maintenance of the developments.

**5.0 PROJECT BOUNDARY AND FACILITIES**

The island on which MPC proposes the development is located between the Thompson Falls Project's Main and Dry Channel dams.

## **6.0 COSTS**

### **6.1 Developmental**

The following developmental cost estimates are in 1994 dollars and were provided by Bob Fulton, Civil Engineer, Polson, MT in February, 1994.

#### **6.1.1 Island Development**

The cost for constructing the Island Development is estimated to be approximately \$80,000.

#### **6.1.2 High Bridge**

MPC's contribution to the rehabilitation of the High Bridge is \$20,000. This contribution is dependent on the future decision to rehabilitate the bridge for pedestrian and bicycle access. If the community does not to pursue the bridge rehabilitation by December 31, 1998, MPC's funding commitment will shift to the development on the south shore.

#### **6.1.3 South Shore Development**

The cost for constructing the South Shore is estimated to be approximately \$17,200.

### **6.2 Operation and Maintenance**

The following operation and maintenance costs are in 1994 dollars and will be adjusted in the future to reflect the actual costs of properly operating and maintaining the developments.

#### **6.2.1 Island Development**

MPC estimates the annual operation and maintenance costs for the Island Development to be between \$3,500 and \$5,200. The \$5,200 estimate was provided by the USFS through consultation on this project.

#### **6.2.2 High Bridge**

MPC does not propose to contribute to the operation and maintenance of the High Bridge, which is owned by Sanders County.

#### **6.2.3 South Shore Development**

MPC estimates the annual operation and maintenance costs for the South Shore Development to be approximately \$2,000.

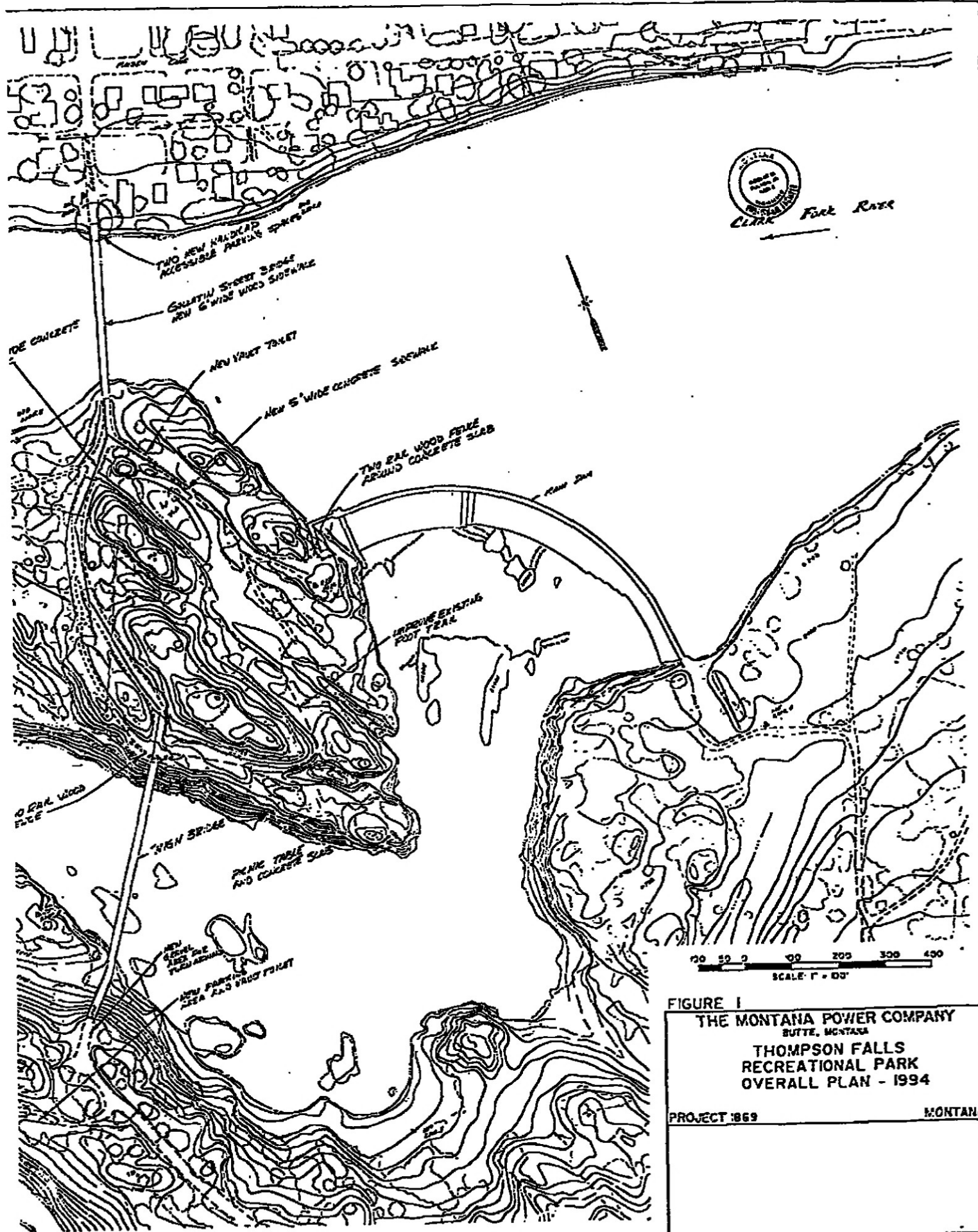


## **7.0 CONSTRUCTION SCHEDULE**

The development on the island between the Main and Dry Channel dams will be completed within one year of completion of the expansion project, which is scheduled for 1996.

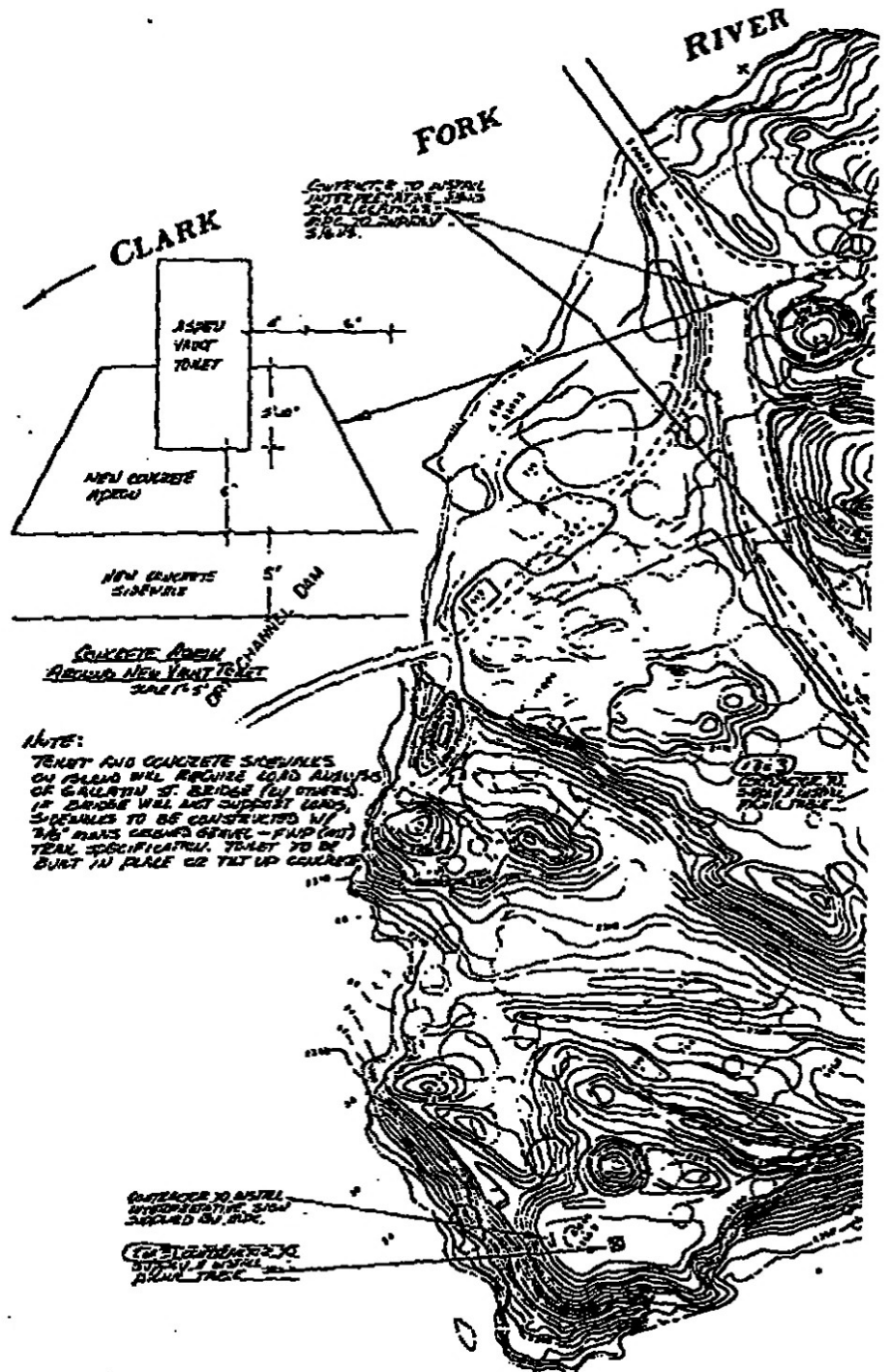
**FIGURES**



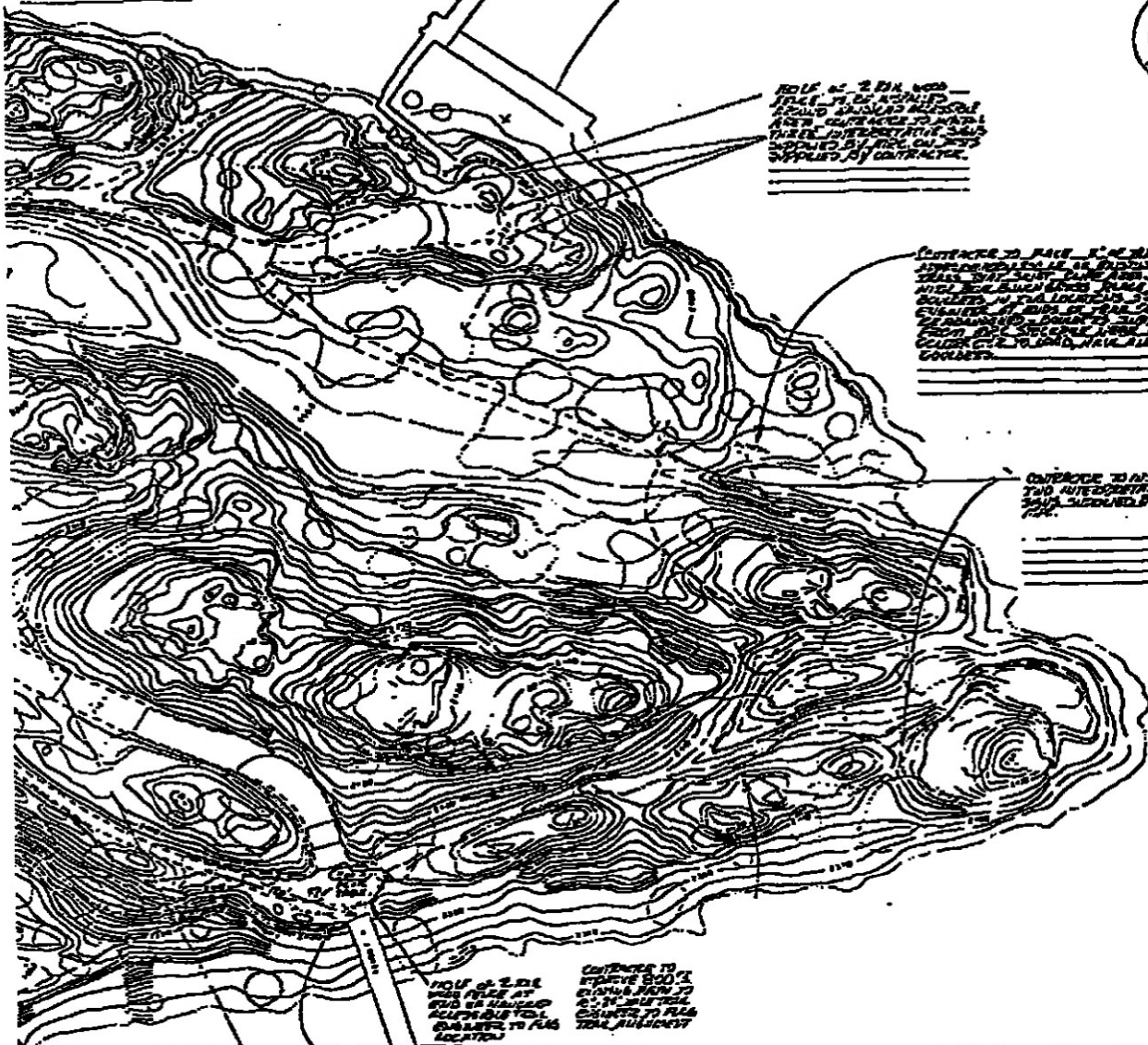


Clark Fork River

FIGURE 1  
 THE MONTANA POWER COMPANY  
 BUTTE, MONTANA  
 THOMPSON FALLS  
 RECREATIONAL PARK  
 OVERALL PLAN - 1994  
 PROJECT 1869 MONTANA



CONTRACTOR TO INSTALL  
 10" DIA. PIPE FOR  
 TRAIL AND WALK  
 FROM TRAIL TO ROAD BRIDGE  
 TO BE INSTALLED  
 BY CONTRACTOR  
 TO BE INSTALLED  
 TO BE INSTALLED  
 TO BE INSTALLED



GROUP OF 2 DIA. WOOD  
 PILES TO BE INSTALLED  
 AT THIS LOCATION  
 AS SHOWN ON DRAWING  
 TO BE INSTALLED  
 BY CONTRACTOR

CONTRACTOR TO PLACE 8" DIA. PIPE  
 FROM TRAIL TO ROAD BRIDGE  
 TO BE INSTALLED  
 BY CONTRACTOR

CONTRACTOR TO INSTALL  
 TWO AUTOMATIC  
 VALVES

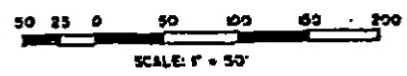
GROUP OF 2 DIA.  
 WOOD PILES AT  
 THIS LOCATION  
 AS SHOWN ON  
 DRAWING TO BE  
 INSTALLED BY  
 CONTRACTOR

CONTRACTOR TO INSTALL  
 TWO AUTOMATIC  
 VALVES

CONTRACTOR TO BUILD  
 10" DIA. PIPE FOR  
 TRAIL AND WALK  
 FROM TRAIL TO ROAD  
 BRIDGE TO BE  
 INSTALLED BY  
 CONTRACTOR

CONTRACTOR TO BUILD  
 AND INSTALL  
 TABLES 3 PILES  
 TO BE INSTALLED  
 BY CONTRACTOR

SEE SHEET 7  
 FOR IMPROVEMENTS  
 ON SOUTH SIDE

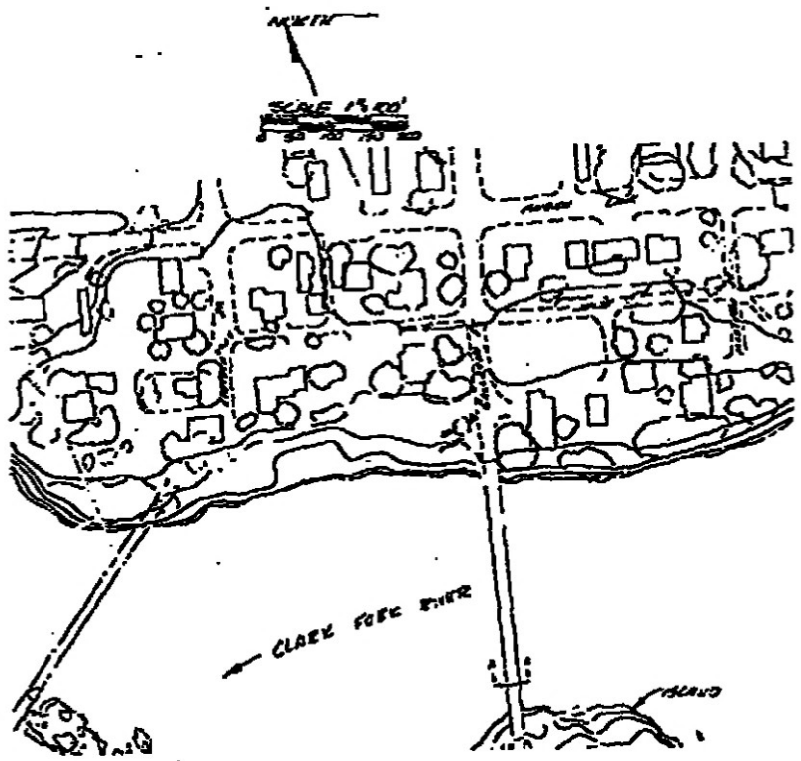


**FIGURE 2**

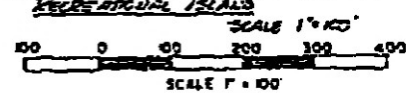
**THE MONTANA POWER COMPANY**  
 BUTTE, MONTANA

**THOMPSON FALLS  
 RECREATIONAL PARK  
 IMPROVEMENTS - 1994**

PROJECT 1269 MONTANA

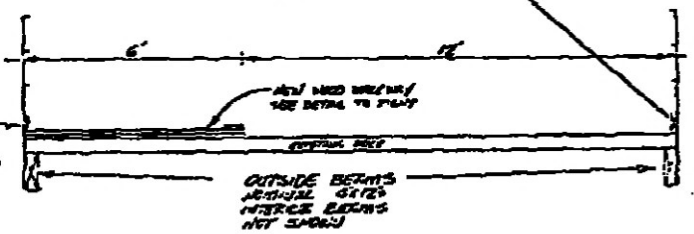


**EXISTING BRIDGE TO THOMPSON FALLS  
FREDERICTON ISLAND**

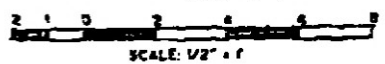


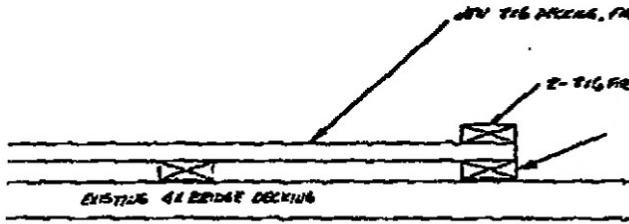
CONCRETE TO BOLT WITH  
240 PU STUDS, 2\"/>

CONCRETE TO  
BOLT WITH 240 PU  
STUDS OF 1/2\"/>



**BRIDGE DECK SECTION AA**  
SCALE 1/2" = 1'

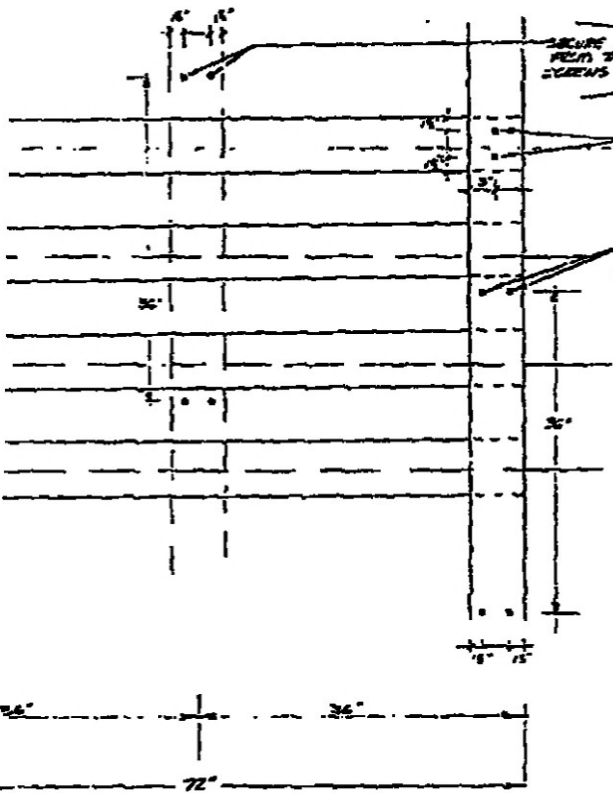




3-2x6 PRESSURE TREATED SECURED TO EXISTING BRIDGE WALK. EXISTING DISCONTINUITIES IN DECK TO BE LEVELED TO ALLOW NEW 2x6 PT DECKING TO MATCH TOP ELEVATIONS AT ALL JOINTS & 1/2" LEVelling MAY BE ACCOMPLISHED BY PLANING OR CHIPPING OFF HIGH SPOTS IN EXISTING DECKING OR SHIMMING WITH 2x6 PT DECKING WITH REDWOOD SHIMS UP TO 1/8" THICK.

STAIRS OUTSIDE 2" FINISH SECTION OF WALKWAY

NEW WALKWAYS SHALL NOT ALLOW FOR MORE THAN 0.25" VARIATION WHEN 10' STRAIGHT EDGE IS Laid OUTTOP OF FINISHED SURFACE



SECURE WALKWAY TO EXISTING BRIDGE WALK WITH 2x6 BR. NAILS OUTSIDE EDGE OF NEW WALKWAY

SECURE 2x6 BR. NAILS TO TREATED 2x6 DECK W/ 4x4 BR. NAILS AT EACH CONNECTION POINT (3)

SECURE TWO OUTSIDE 2x6 BR. NAILS TO 2x6 DECK W/ 2-4x4 BR. NAILS AT EACH CONNECTION POINT (3)

NOTES:

1. ALL WOOD FOR WALKWAY TO BE PRESSURE TREATED P.F. 155
2. WOOD SHIMMING TO BE CONSTRUCTED IN 10' LONG DETAILS SECURED TO BRIDGE W/ 4, 6" NAILS GRAPHELLED LAG BOLTS

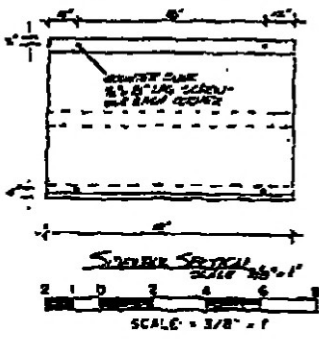
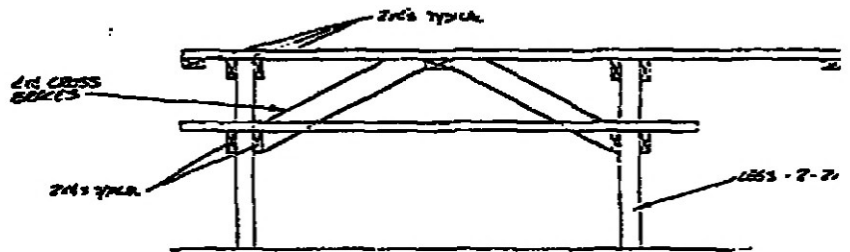
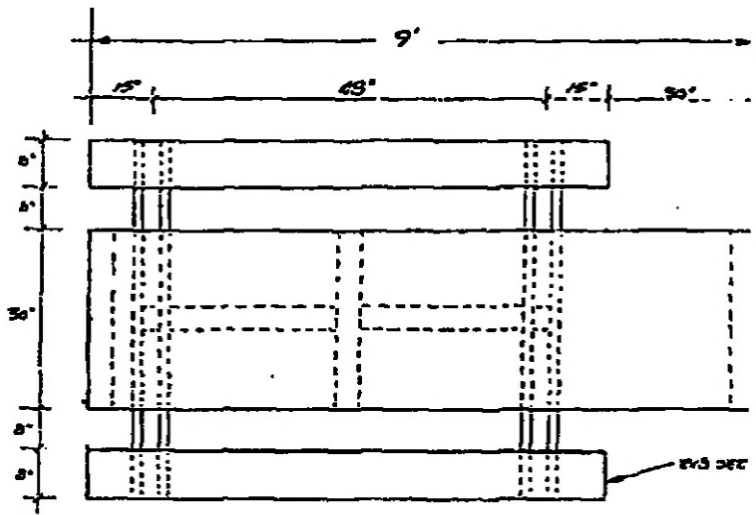


FIGURE 3  
 THE MONTANA POWER COMPANY  
 BUTTE, MONTANA  
 THOMPSON FALLS  
 RECREATIONAL PARK  
 IMPROVEMENTS - 1994  
 PROJECT 1869 MONTANA

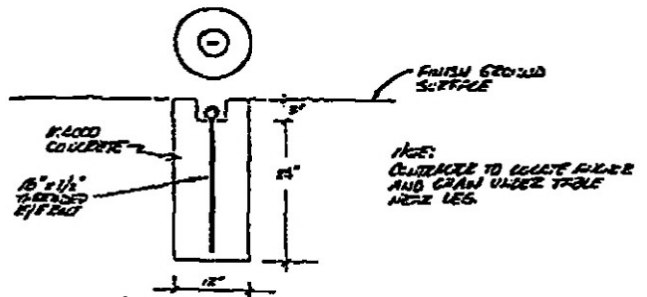




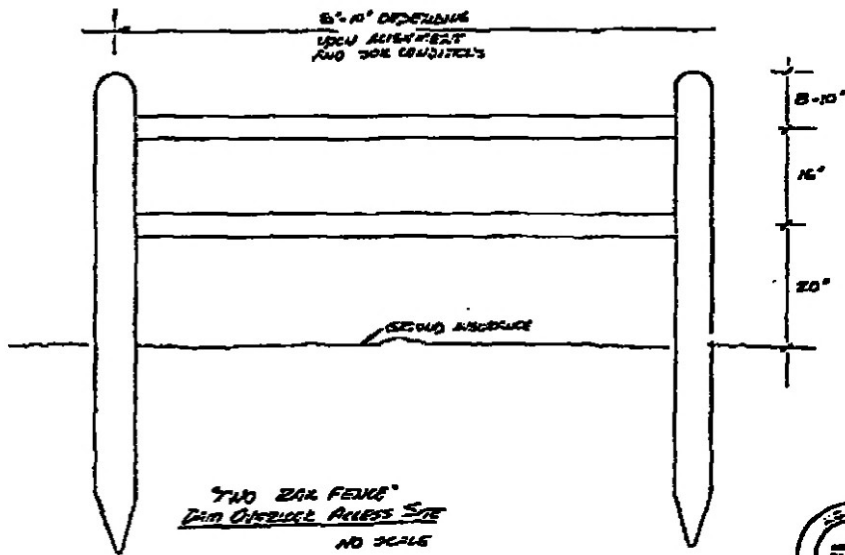
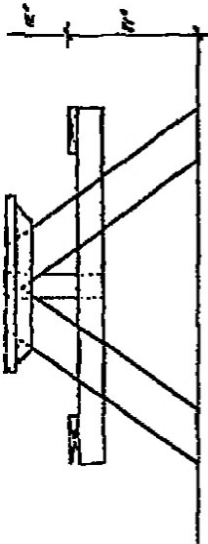
**FLUR TABLE (3 REQUIRED)**

**NOTES:**

- 1) ALL WOOD FOR TABLE TO BE LOWER GRADE OR BETTER REDUCED
- 2) ALL FASTENERS TO BE 3/8" DIA. CARTRIDGE BOLTS
- 3) WOOD TO BE OILED W/ BORNE LANCED OR ALLOWING CONSTRUCTION (I.)
- 4) CONTRACTOR TO SUPPLY 3 TABLES
- 5) CONTRACTOR TO BRUCE TABLES W/ 6' LENGTH OF 2 1/2" HIGH 150# SYSTEM CHAIN ESCERS TO CONCRETE ALIANCE (SEE DETAIL THIS PAGE)
- 6) CONTRACTOR TO SUPPLY 3 - WATER LOCKS, 1/2" DIA. PIPE, MODEL NO. SA10R-A-6



**TABLE ALIGNER (3 REQ'D)**



TWO RAIL FENCE  
 OVER OVERHEAD POWER LINE  
 NO SCALE

POSTS TO BE MINIMUM 6" LODGEPOLE  
 RAILS TO BE MINIMUM 4" LODGEPOLE

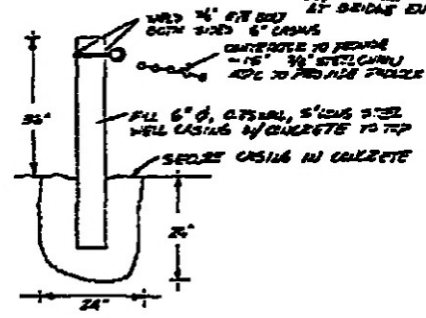
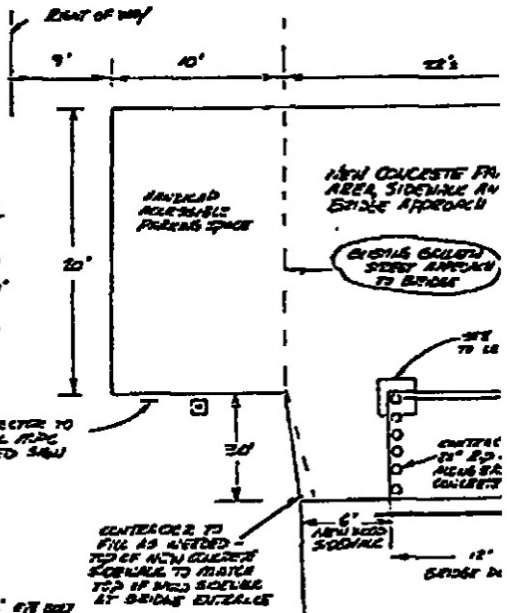


SCALE: NONE

FIGURE 4

<p>THE MONTANA POWER COMPANY          BUTTE, MONTANA</p> <p>THOMPSON FALLS          RECREATIONAL PARK          IMPROVEMENTS - 1994</p> <p>PROJECT 1869</p>
--

NOTES FOR BRIDGE SPACES,  
SIDEWALK AND BRIDGE APPROACH:  
1) CONSTRUCTION OF BRIDGE SPACES AND  
CONCRETE ON BRIDGE TO MEET  
CITY CONSTRUCTION STANDARDS  
2) ALL AREAS WHERE CONCRETE  
FORMS SHALL BE PLACED, CONTRAST  
TO EXISTING 2" OF EXISTING REINFORCEMENT  
BE 2#4 AND PLACE 1" COMPACTED  
3" FINISH BIT RUN GRAVEL, 6"-24"  
CONCRETE & 4" OF #400 REINFORCED  
CONCRETE (14x16 MESH) SLAB.  
SLAB TO BE 2" OF APPROX. 100' 0"  
COVERS BY 2" FINISHED CURBS.  
FINISH BRIDGE FINISH, SLAB TO  
EXIST & REST 1/4" FROM 6" CURB



CURB AND CHANNEL DETAIL  
AT BRIDGE ENTRANCE  
1/4" SCALE

PLAN - NEW BRIDGE

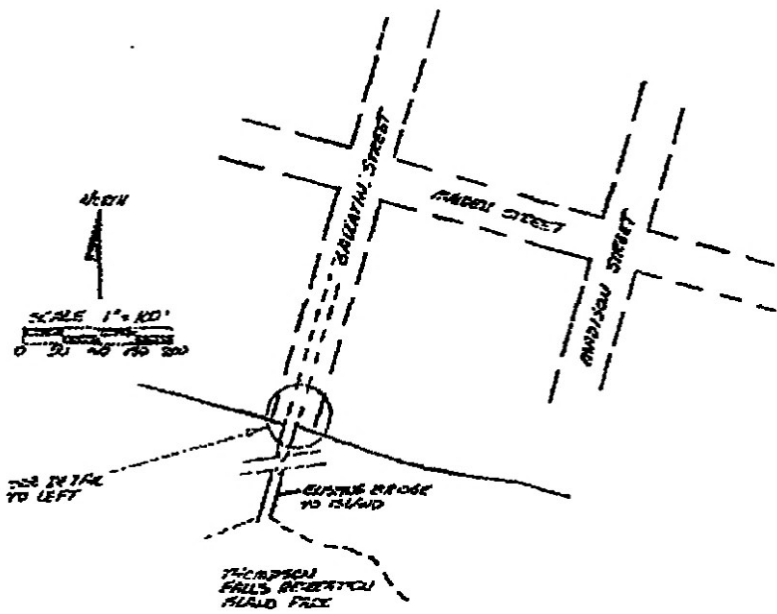
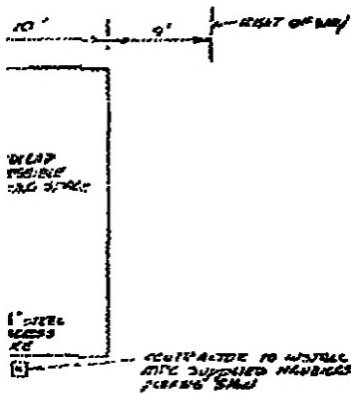
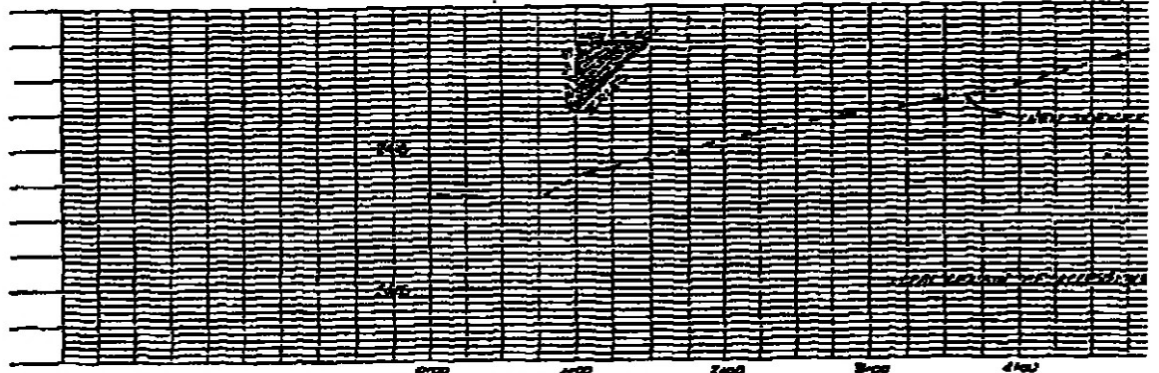
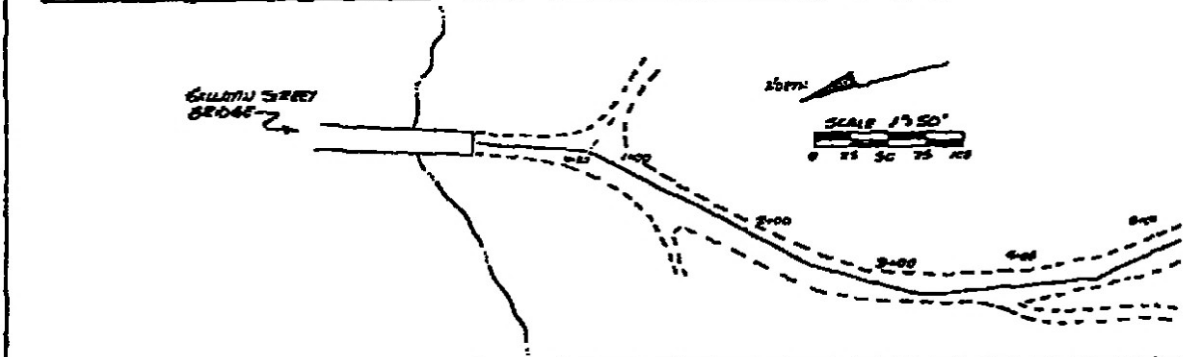
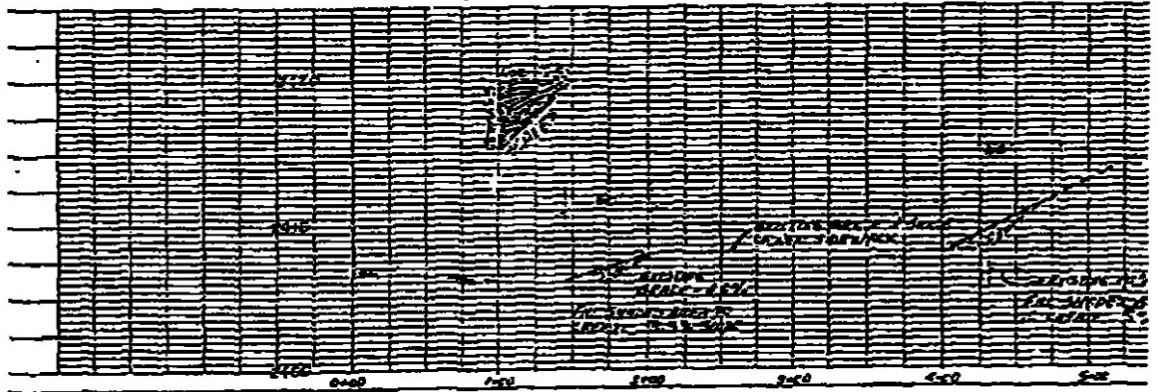
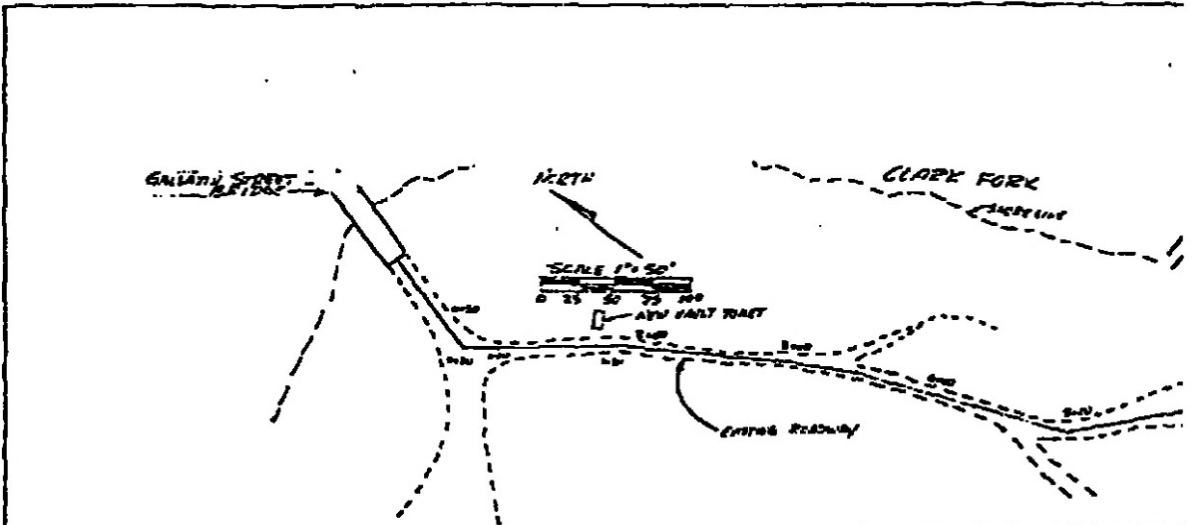


FIGURE 5

<p><b>THE MONTANA POWER COMPANY</b>          BUTTE, MONTANA</p> <p><b>THOMPSON FALLS          RECREATIONAL PARK          IMPROVEMENTS - 1994</b></p> <p>PROJECT 869</p>
---



2000' (60'x50') AREA  
 WITHIN EDGE TO BE NEW  
 CONCRETE SIDEWALK, BEHIND  
 EXISTING SIDEWALK. SEE  
 PLAN FOR LOCATION. SEE  
 SECTION FOR DETAILS.  
 SEE CROSS SECTION 6.

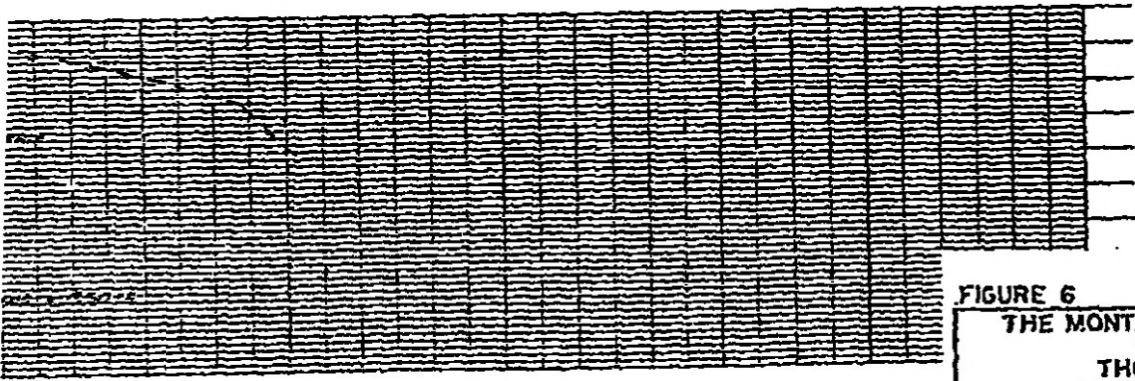
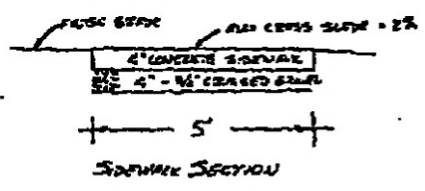
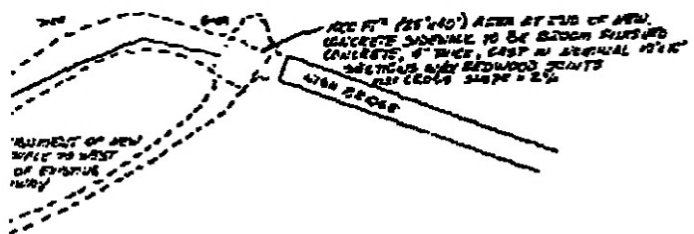
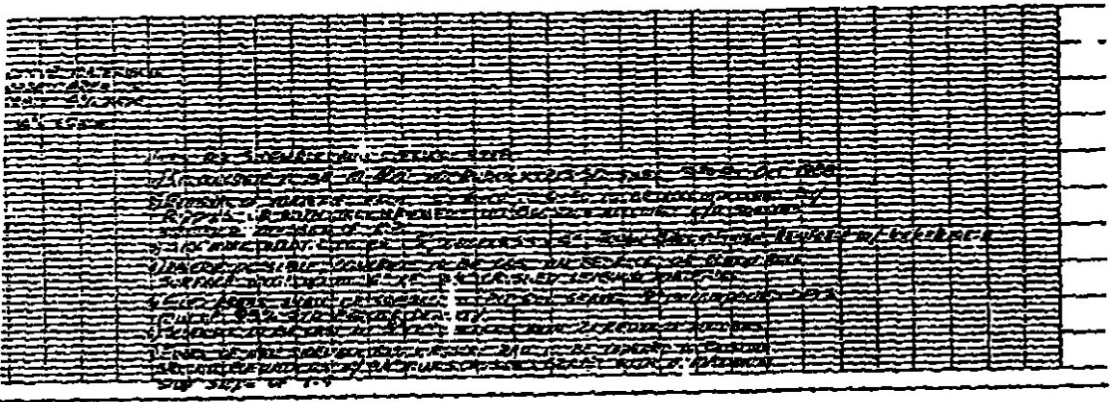


FIGURE 6

THE MONTANA POWER COMPANY  
 BUTTE, MONTANA  
 THOMPSON FALLS  
 RECREATIONAL PARK  
 ISLAND ACCESSIBLE TRAILS  
 IMPROVEMENTS - 1994

PROJECT 1869 MONTANA

North

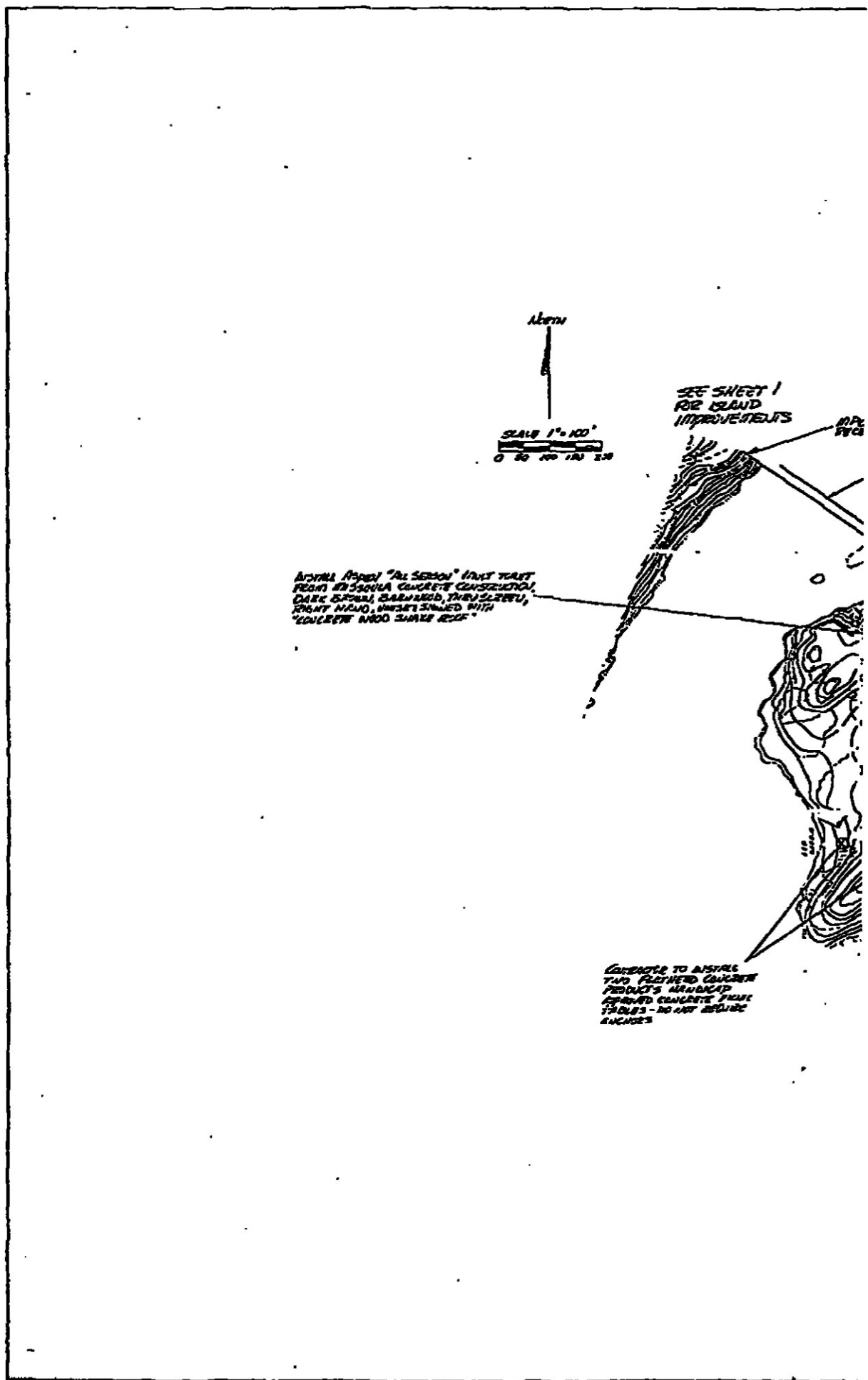
SCALE 1" = 100'  
0 50 100 150 200

SEE SHEET 1  
FOR ISLAND  
IMPROVEMENTS

MP  
TVC

ARMY AIRPORT "AL SERON" UNIT THAT  
FROM MISSOURI CONCRETE CONSTRUCTION,  
DARK BROWN, BARKING, THEN SLIPPER,  
RIGHT HAND, WHEELS FILLED WITH  
"CONCRETE AND SAND MIXTURE"

CONCRETE TO BE LAYED  
TWO FEET THICK CONCRETE  
PRODUCTS MANUFACTURED  
FOR CONCRETE FROM  
TABLES - DO NOT REQUIRE  
ANCHORS



NOTE: THIS SHEET DELETES IMPROVEMENTS TO THE "SOUTH SIDES BEER". THESE IMPROVEMENTS ARE NOT CURRENTLY SCHEDULED TO BE IMPLEMENTED BUT WILL BE RECONSIDERED WHEN THE LONG TERM STATUS OF THE HSB BRIDGE IS DETERMINED.

SOU FALLS ISLAND PARK  
 HSB BRIDGE  
 MODIFICATIONS  
 SEE THIS CONTRACT

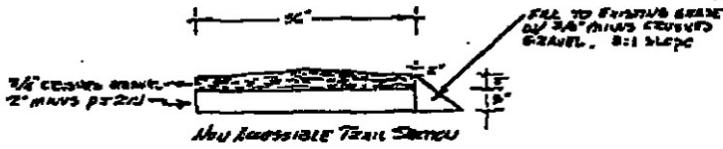
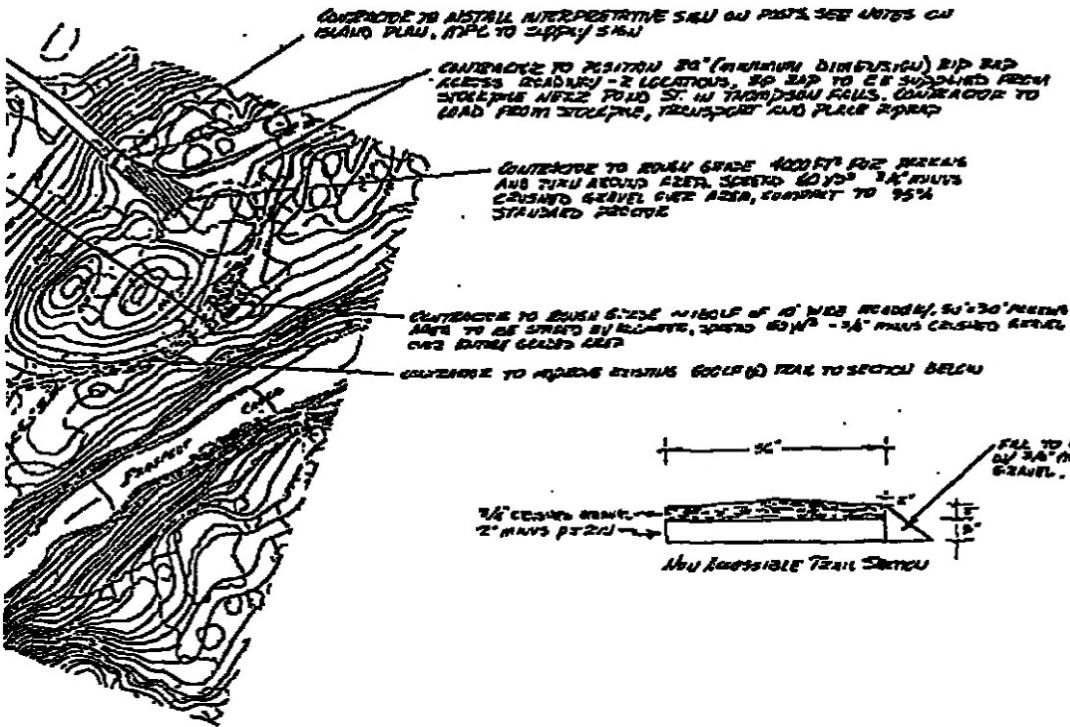


FIGURE 7  
 THE MONTANA POWER COMPANY  
 BUTTE, MONTANA  
 THOMPSON FALLS  
 RECREATIONAL PARK  
 SOUTH SHORE  
 SUPPLEMENTAL SHEET  
 PROJECT 1869 1994 MONTANA



LETTERS OF CONSULTATION



GENERAL OFFICES : 40 EAST BROADWAY, BUTTE, MONTANA 59701

**MONTANA POWER COMPANY**

July 21, 1993

\_\_\_\_\_  
\_\_\_\_\_  
\_\_\_\_\_  
Dear \_\_\_\_\_:

Earlier this year I sought comments from you about the Montana Power Company's revised plans to modify the access route to the proposed powerhouse, to relocate the spoils deposition area and to redraft the recreation plan at its Thompson Falls Hydroelectric Project, Federal Energy Regulatory Commission (FERC) No. 1869-003 located in Thompson Falls, Montana. After reviewing the revised plans and all of the comments, including but not limited by yours, the FERC amended MPC's operating license and issued an order approving the access road relocation.

As part of the order, FERC specified MPC "shall file a revised report on recreation resources detailing its proposal for recreation development in lieu of development of Island Park by April 1, 1994, for Commission approval. The report shall include documentation of consultation with the United States Forest Service, the City of Thompson Falls, the Montana Department of Fish, wildlife and parks, Sanders County, the Sanders County Economic Development Corporation and the National Park Service. The Commission reserves the right to make changes to MPC's plan."

We have scheduled a meeting to begin the planning process for the new recreation development. The meeting will be held in the Sanders County Courthouse courtroom, located in Thompson Falls at 1:30 p.m. on Monday, August 23, 1993.

Your participation in the planning process is greatly appreciated by MPC and should help ensure the revised recreation plan will meet the community's and the public's needs. I have enclosed a copy of the mailing list for your information.

If you have any questions, please feel free to call me at (406) 723-5421.

Sincerely,

Elvin Fitzhugh  
Coordinator, Land Use  
and Recreation Resources

EF/st

Enclosure

cc: Dan Hayes - FERC

**Thompson Falls Hydroelectric Project,  
Federal Energy Regulatory Commission No. 1869-003  
Mailing List**

Mark Childress  
Blains Ranger District  
U.S. Forest Service  
P.O. Box 429  
Blains, MT 59859

Larry Ward, Mayor  
City of Thompson Falls  
P.O. Box 263  
Thompson Falls, MT 59873

Jan Vincent, Regional Supervisor  
Region 1  
Montana Department of Fish,  
Wildlife and Parks  
90 North Median Road  
Kalispell, MT 59901

Cherrie Hooten  
Sanders County Commissioner  
Sanders County  
P.O. Box 519  
Thompson Falls, MT 59873

Bob Fletcher, Secretary  
Sanders County Economic Development Corp.  
First State Bank of Thompson Falls  
P.O. Box 638  
Thompson Falls, MT 59873

Michael Duwe  
Division of Planning and Compliance  
National Park Service  
Rocky Mountain Regional Office  
12795 West Alameda Parkway  
P.O. Box 25287  
Denver, CO 80225-0287

T-Falls Meeting 8/23/93

Name	Representing	Phone #
Cherie Weston	Sanders County	827-4391
Larry Ward	City of T-Falls	827-3277
Bruce Sterling	FWP	827-4389
BOB FLETCHER	SLEDC	827-3565
Fred Haas	USFS - Plains/Thompson	Falls RD 826-3821
Gady Watkins	FWP	752-5501
Pat [unclear]	MPE	(home) 752-0007
Elvin [unclear]	MPC	723-5421
NORM RESLER	SANDERS CO	723-5421
		827-3137



GENERAL OFFICES : 40 EAST BROADWAY, BUTTE, MONTANA 59701

September 21, 1993

Dear \_\_\_\_\_:

As per our discussions on August 23, 1993, we will hold our second meeting in Thompson Falls on Monday, September 27, 1993. The meeting will be held in the Sanders County Courthouse Courtroom at 1:30 p.m. Please review the draft drawing for the revised recreation plan so we can discuss it at the meeting.

If you have any questions please feel free to call me at (406) 723-5421, extension 3263

Sincerely

Elvin Fitzhugh  
Coordinator, Land Use  
and Recreation Resources

/s/

enclosure

cc: Dan Hays - FERC

(3263)T01-7

TELEPHONE 406/723-5421 • FACSIMILE 406/496-5099

**Thompson Falls Hydroelectric Project,  
Federal Energy Regulatory Commission No. 1869-003  
Mailing List**

**Mark Childress  
Plains Ranger District  
U.S. Forest Service  
P.O. Box 429  
Plains, MT 59859**

**Larry Ward, Mayor  
City of Thompson Falls  
P.O. Box 263  
Thompson Falls, MT 59873**

**Dan Vincent, Regional Supervisor  
Region 1  
Montana Department of Fish,  
Wildlife and Parks  
490 North Median Road  
Kalispell, MT 59901**

**Cherrie Hooten  
Sanders County Commissioner  
Sanders County  
P.O. Box 519  
Thompson Falls, MT 59873**

**Bob Fletcher, Secretary  
Sanders County Economic Development Corp.  
First State Bank of Thompson Falls  
P.O. Box 638  
Thompson Falls, MT 59873**

**Michael Duwe  
Division of Planning and Compliance  
National Park Service  
Rocky Mountain Regional Office  
12795 West Alameda Parkway  
P.O. Box 25287  
Denver, CO 80225-0287**

# Sanders County

## State of Montana



September 27, 1993

Mr. Fitzhugh  
Montana Power Company

Dear Mr. Fitzhugh:

I am sorry I will be unable to attend your meeting today. I will be acting as Sanders County Representative for a Three County Regional RC&D meeting at the Rimrock today. No information was forthcoming on the Highbridge that I am aware of.

Again I am sorry I will be unable to attend today. If you have any questions or information for me, please feel free to call me at 827-4391.

Sincerely,

---

Cherie Hooten, Chairman  
Board of County Commissioners  
Sanders County, Montana



GENERAL OFFICES: 40 EAST BROADWAY, BUTTE, MONTANA 59701

MONTANA POWER COMPANY

February 10, 1994

\_\_\_\_\_  
\_\_\_\_\_  
\_\_\_\_\_  
Dear \_\_\_\_\_:

We have been in the process of developing the plans for the Thompson Falls Island Recreation Area and have scheduled a meeting to discuss them next week. The meeting will be held in the Sanders County Courthouse Courtroom, located in Thompson Falls at 1:30 p.m. on Thursday, February 17, 1994.

Your participation in the planning process is greatly appreciated and should help insure the recreation plan meets the community's and the public's needs. I have enclosed a copy of the participant mailing list for your information.

If you have any questions, please feel free to call me at (406) 723-5454, extension 73263.

Sincerely,

Elvin Fitzhugh  
Coordinator, Land Use  
and Recreation Resources

EF/st

Enclosures

cc: Dan Hays - FERC



Thompson Falls Hydroelectric Project  
Federal Energy Regulatory Commission No. 1869-003  
Mailing List

Frederick Haas  
Plains Ranger District  
U.S. Forest Service  
P.O. Box 429  
Plains, MT 59859

Larry Ward, Mayor  
City of Thompson Falls  
P.O. Box 263  
Thompson Falls, MT 59873

Dan Vincent, Regional Supervisor  
Region 1  
Montana Department of Fish,  
Wildlife and Parks  
49 North Median Road  
Kaiser, MT 59901

Cherrie Hooten, Commissioner  
Sanders County  
P.O. Box 519  
Thompson Falls, MT 59873

Norma Resler, Commissioner  
Sanders County  
P.O. Box 519  
Thompson Falls, MT 59873

Beverly Fletcher, Secretary  
Sanders County Economic Development Corp.  
First State Bank of Thompson Falls  
P.O. Box 638  
Thompson Falls, MT 59873

Michael Duwe  
Division of Planning and Compliance  
National Park Service  
Rocky Mountain Regional Office  
195 West Alameda Parkway  
P.O. Box 25287  
Denver, CO 80225-0287

T-Falls

Meeting

2/17/94

Name

Representing

Phone #

Elvin Fitzhugh

MPC

723-5421

Andy Watkins

FWP

752-5501

Larry Winkler

City of T.F.

827-3542

Tom Eggenberger

" " "

3421

Fred News

USFS Plain/Thompson Falls RD

826-3821

BOB FLETCHER

SANDERS CITY CDC

827-3565

Larry Ward

City of T Falls

827-3277

Robert K. Brubaker

MPCO Hydro Plant

827 4735

BOB FULTON

CONSULTANT

8939217



GENERAL OFFICES : 40 EAST BROADWAY, BUTTE, MONTANA 59701

MONTANA POWER COMPANY

February 24, 1994

\_\_\_\_\_  
\_\_\_\_\_  
\_\_\_\_\_

Dear \_\_\_\_\_ :

As per our discussions during the February 17, 1994 meeting, I am enclosing a copy of the final plans for the Thompson Falls Recreation Development. Hopefully, all of the issues that have been discussed are addressed in the plans. If we have overlooked something you are concerned with, please let me know immediately. Otherwise, please provide me with your concurrence by March 9, 1994. This will allow us time to file the plans with the Federal Energy Regulatory Commission by the April 1, 1994 deadline.

Again, thank you for your time and effort in helping us develop a plan that will meet the public's needs in the Thompson Falls area. If you have any questions, please feel free to call me at (406) 723-5454, extension 73263.

Sincerely,

Elvin Fitzhugh  
Coordinator, Land Use  
and Recreation Resources

EF/st

Enclosure

cc: Dan Hays, FERC  
Marty Watkins, MDFWP  
Fred Haas, USFS

bcc: Jack Haffey  
Don Sprague  
Rick Walsh  
Dave Sather  
Pat Asay

Art Neill  
Larry Thompson  
Bob Covington  
John Van Daveer  
Mike Manion

Bill Rhoads  
Bob Brickzin

**Thompson Falls Hydroelectric Project  
Federal Energy Regulatory Commission No. 1869-003  
Mailing List**

Dick Smith, District Ranger  
Plains Ranger District  
U.S. Forest Service  
P.O. Box 429  
Plains, MT 59859

Larry Ward, Mayor  
City of Thompson Falls  
P.O. Box 263  
Thompson Falls, MT 59873

Dan Vincent, Regional Supervisor  
Region 1  
Montana Department of Fish,  
Wildlife and Parks  
490 North Median Road  
Kalispell, MT 59901

Cherrie Hooten, Commissioner  
Sanders County  
P.O. Box 519  
Thompson Falls, MT 59873

Norm Resler, Commissioner  
Sanders County  
P.O. Box 519  
Thompson Falls, MT 59873

Bob Fletcher, Secretary  
Sanders County Economic Development Corp.  
First State Bank of Thompson Falls  
P.O. Box 638  
Thompson Falls, MT 59873

Nathalie Powell  
Division of Environmental  
and Public Services  
National Park Service  
Rocky Mountain Regional Office  
12795 West Alameda Parkway  
P.O. Box 25287  
Denver, CO 80225-0287